



22 Perennial Drive Kurunjang VIC

4 2 2

Displaying an impressive blend of captivating modern features and contemporary style, this property is also located in close proximity to everything Kurunjang has to offer including Kurunjang Primary/Secondary School, Macpherson Park, parks, walking tracks and the brand-new Melton Christian College Toolern Vale Campus.

Situated at the front of the home is the generously sized master bedroom that comes complete with a large walk-in robe and a bright ensuite. Continuing through this stunning home you will find the large living room, boasting plenty of space for the whole family to relax and enjoy the newest release. Moving further into the home the remaining three bedrooms are all generously sized, feature built in robes and are serviced by the central bathroom, hosting the same quality inclusions as the ensuite.

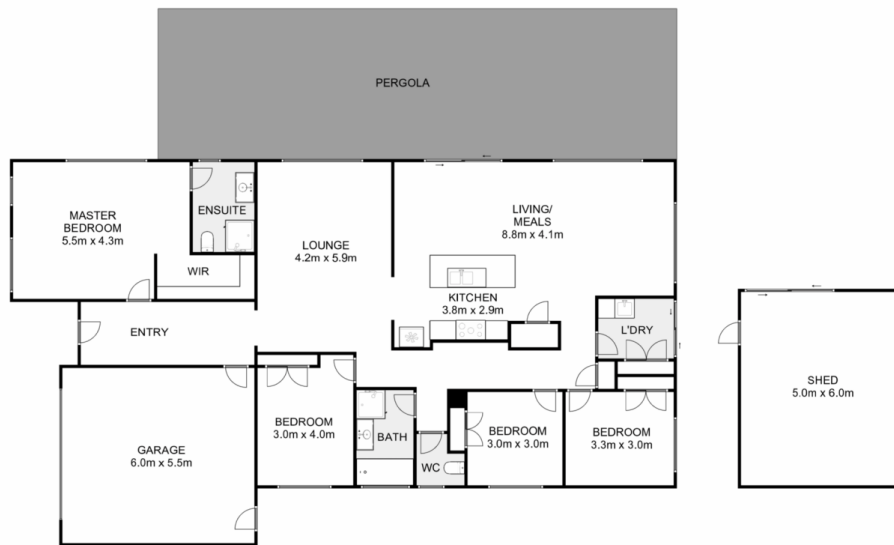
Price : \$ 592,000
Land Size : 571 sqm
View : <https://www.ypa.com.au/8178041>



Shane Spiteri
0488 980 115



Ricky Frew
0402 007 100



22 Perennial Drive, Kurunjang

YPA

Whilst every attempt has been made to ensure the accuracy of the floor plan contained here, measurements of doors, windows, rooms and any other items are approximate and no responsibility is taken for any error, omission, or mis-statement. This plan is for illustrative purposes only and should be used as such by any prospective purchaser. The services, systems and appliances shown have not been tested and no guarantee as to their operability or efficiency can be given.

