



## 7 Gosse Crescent Brookfield VIC

4 2 2

Situated in close proximity to all levels of schooling, parks, walking tracks, public transport and future development, this property offers great value for all buyers in the market.

This home comprises of four generously sized bedrooms, master bedroom complete with walk in robe and bright ensuite, with the remaining three bedrooms all containing built in robes and serviced by a stunning central bathroom.

The modern kitchen features ample storage space, which overlooks the large open plan living and meals zone with pleasing views of the spacious back yard containing plenty of space for kids or pets to run and play.

Additional features include; ample storage, large laundry, double garage with internal access, and much more.

**Price** : \$ 506,000

**Land Size** : 448 sqm

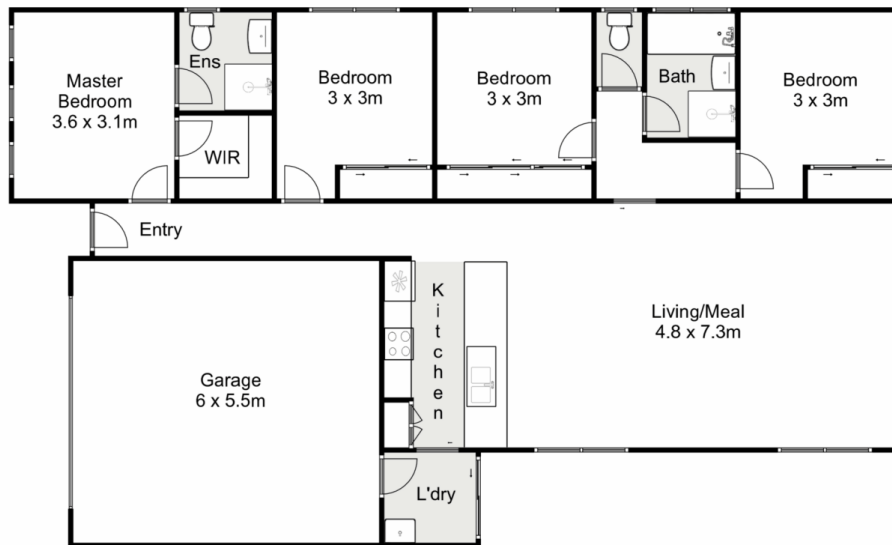
**View** : <https://www.ypa.com.au/8163535>



**Shane Spiteri**  
0488 980 115



**Kate McGlone**  
0401 853 244



## 7 Gosse Crescent, Brookfield

Ypa

Whilst every attempt has been made to ensure the accuracy of the floor plan contained here, measurements of doors, windows, rooms and any other items are approximate and no responsibility is taken for any error, omission, or mis-statement. This plan is for illustrative purposes only and should be used as such by any prospective purchaser. The services, systems and appliances shown have not been tested and no guarantee as to their operability or efficiency can be given.

