



## 24 Gammage Boulevard Epping VIC

3 2 2

Perfectly positioned on a very generous 399m<sup>2</sup> approx. of land stands this naturally light filled stunning residence making for simple living in the much-desired Epping location! The beauty of being in this suburb is that you literally have everything at your fingertips. Enjoy the convenience of having access to public transport, gorgeous parklands, quality primary and secondary schools, multiple local shopping centres, nearby train station, local sporting clubs and so much more!

### Features Include:

- ? Master bedroom showcases a walk-in wardrobe, ceiling fan and ensuite a skylight and quality fittings
- ? Additional two spacious bedrooms with built in robes and ceiling fans
- ? The kitchen is located perfectly to incorporate the large meals area which leads into the main living area

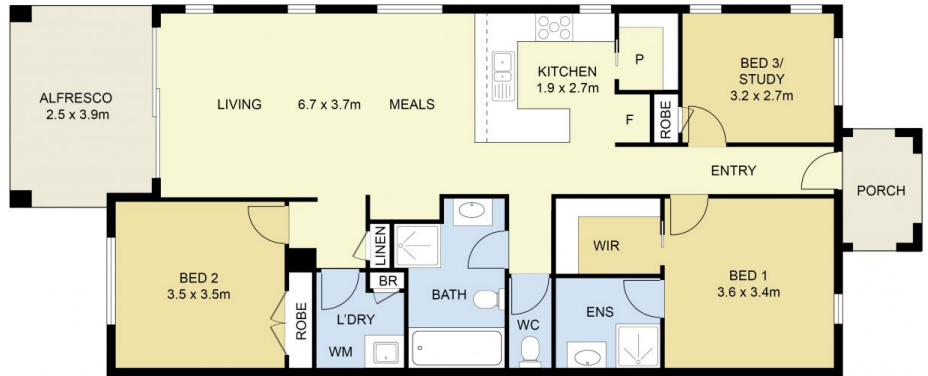
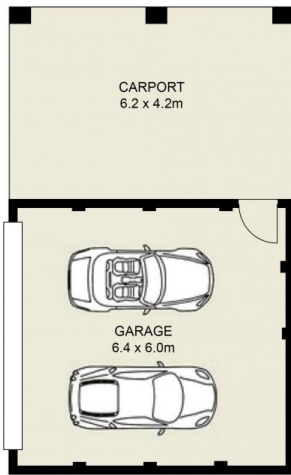
**Price** : \$ 640,000  
**Land Size** : 399 sqm  
**View** : <https://www.ypa.com.au/8162545>



**Stephen Azzopardi**  
0402 012 554



**Andrew Migliorisi**  
0432 526 844



## 24 Gammage boulevard, Epping



DISCLAIMER : ALL DIMENSIONS ARE AN APPROXIMATION ONLY AND NO GUARANTEE IS GIVEN WITH RESPECT TO ACCURACY.