



## 6 Aruma Avenue Harkness VIC

3 2 2

This outstanding home is perfectly located in the highly sought-after Willandra Estate in Harkness within close proximity to schools of all levels including the brand new Melton Christian College Toolern Vale campus, shopping complexes, public transport, parklands, walking tracks and so much more future developments coming, making it the ideal opportunity for everyone.

The spacious and light filled master bedroom sits at the front of the home which is great in size and features a large walk-in robe and stunning ensuite with stone benchtop and larger shower. The two remaining bedrooms are both generously sized featuring built-in robes and are serviced by a bright central bathroom that carries the same upgraded features as the ensuite. Adjacent to the central bedrooms you will find the convenient first living area, providing an ideal area for the family to enjoy or to use for a

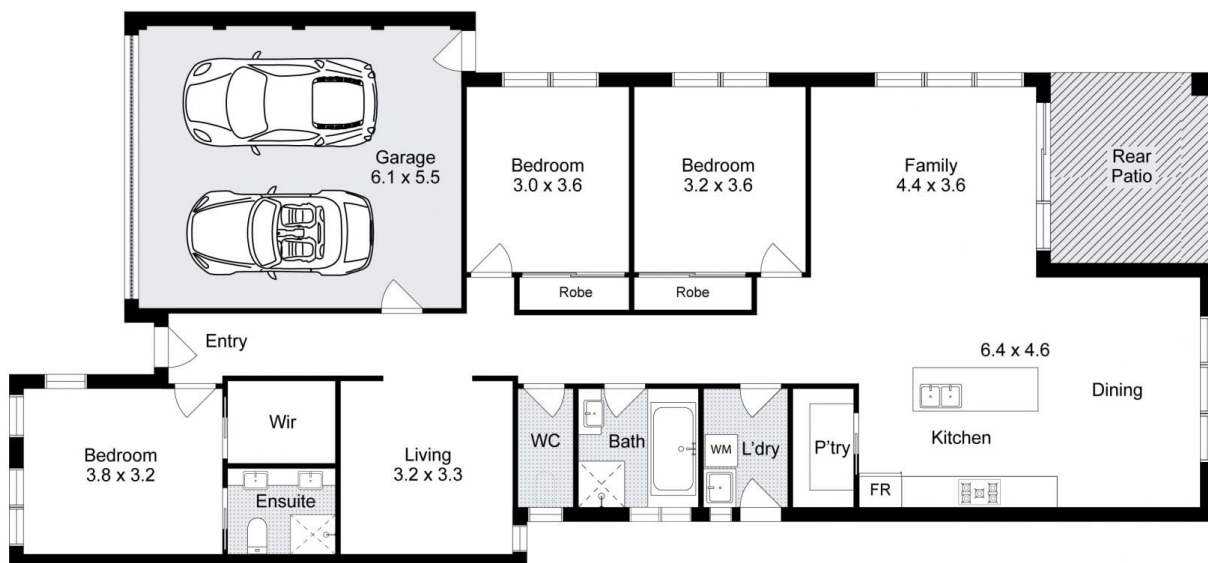
**Price** : \$ 560,000  
**Land Size** : 336 sqm  
**View** : <https://www.ypa.com.au/8146862>



**Shane Spiteri**  
0488 980 115



**Ricky Frew**  
0402 007 100



## 6 Aruma Avenue, Melton West

Whilst every attempt has been made to ensure the accuracy of the floor plan contained here, measurements of doors, windows, rooms and any other items are approximate and no responsibility is taken for any error, omission, or mis-statement. This plan is for illustrative purposes only and should be used as such by any prospective purchaser. The services, systems and appliances shown have not been tested and no guarantee as to their operability or efficiency can be given.

