



## 10 Prahn Court Brookfield VIC

4  2  4 

Providing a rare and unique opportunity to grasp what Brookfield has to offer. Situated on a very generous allotment of 770m<sup>2</sup> (approx.) and within close proximity to local shopping complexes, schools of all levels including the brand new Binap Primary School, parks, leisure centre, public transport, freeway access and so much more. This wonderful property is a great opportunity for everyone.

Upon entering this outstanding family domain you are met by the spacious master bedroom complete with ceiling fan and split system for total temperature control, leading to a sizeable walk-in robe that offers ample storage and space followed by the exceptional ensuite featuring stone benchtops with undermount sink and a larger shower. This is complimented with a huge living area, perfect for the growing family that provides ample space for all to enjoy!

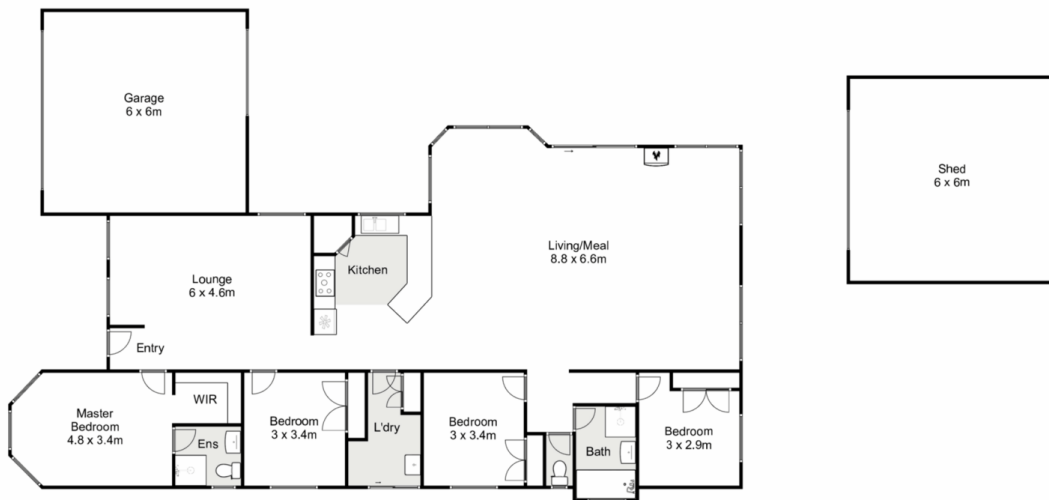
**Price** : \$ 740,000  
**Land Size** : 770 sqm  
**View** : <https://www.ypa.com.au/8146858>



**Shane Spiteri**  
0488 980 115



**Ricky Frew**  
0402 007 100



## 10 Prahm Court, Brookfield

YPA

Whilst every attempt has been made to ensure the accuracy of the floor plan contained here, measurements of doors, windows, rooms and any other items are approximate and no responsibility is taken for any error, omission, or mis-statement. This plan is for illustrative purposes only and should be used as such by any prospective purchaser. The services, systems and appliances shown have not been tested and no guarantee as to their operability or efficiency can be given.

