



57 Wilmot Drive Delahey VIC

3 1 2

Presenting an exceptional opportunity to enter into the Delahey market is this stunning residence which is in a fantastic proximity to quality primary and secondary schools, park lands, public transport, multiple nearby shopping centres and so much more - You don't want to miss out on this one!

Price : \$ 686,000
Land Size : 670 sqm
View : <https://www.ypa.com.au/8146671>

Features Include:

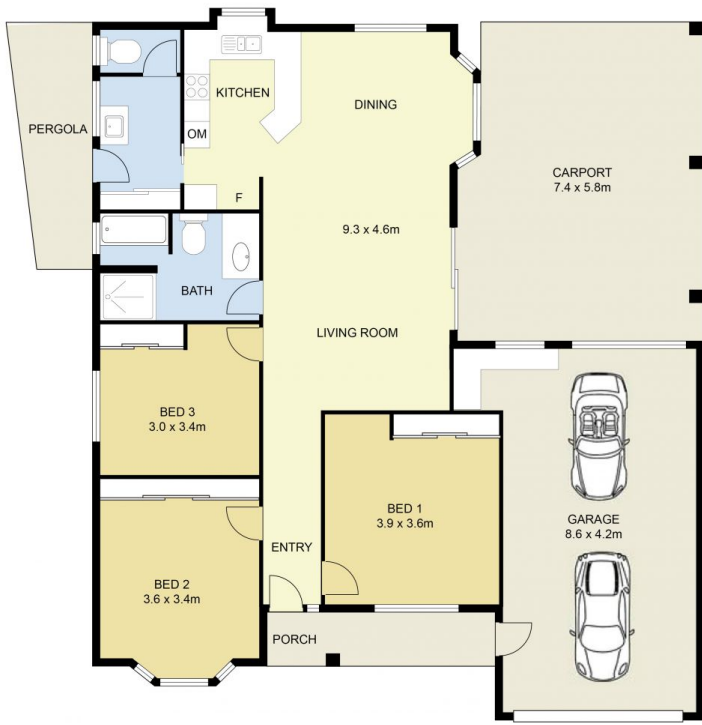
- ? Three spacious bedrooms with built-in wardrobes (One with study nook)
- ? Open plan kitchen is located perfectly to incorporate the meals and living space
- ? Kitchen complete with ample cupboard space, gas cooktop, rangehood, wall oven and double sink
- ? Central bathroom with bathtub and shower
- ? Ducted heating, evaporative cooling, reverse cycle split system unit, electric shutters, two toilets, garden shed



Andrew Migliorisi
0432 526 844



Stephen Azzopardi
0402 012 554



57 Wilmot Drive, Delahey



DISCLAIMER : ALL DIMENSIONS ARE AN APPROXIMATION ONLY AND NO GUARANTEE IS GIVEN WITH RESPECT TO ACCURACY.