

## 11 Scanlon Street Aintree VIC

3 2 2

This impeccably maintained property not only radiates perfection but is conveniently located near Bacchus Marsh Grammar School, Woodlea Town Centre, public transport, the Western Highway, and scenic walking tracks.

**Land Size** : 400 sqm  
**View** : <https://www.ypa.com.au/8145754>

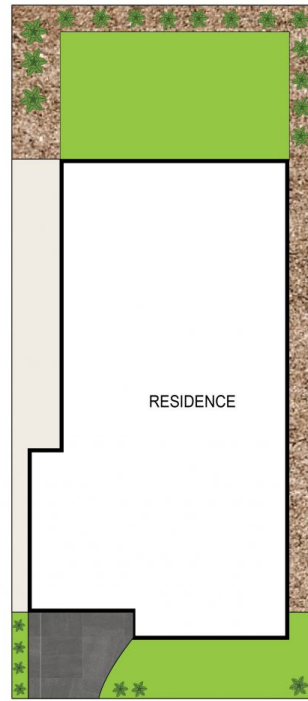
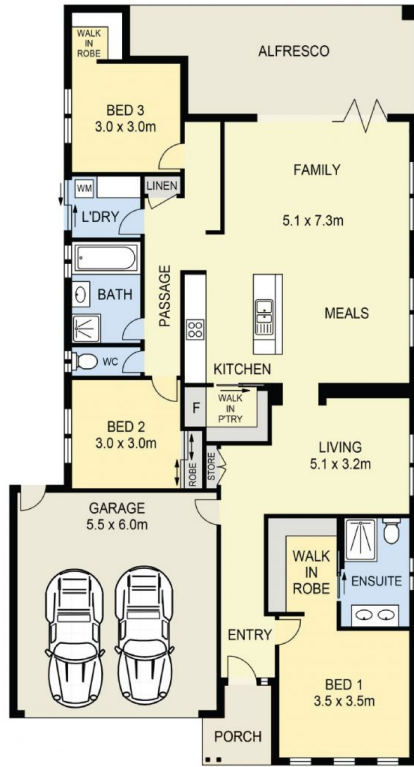
YPA proudly introduces this outstanding residence in the highly respected Woodlea Estate. Seamlessly combining practicality with comfort, it stands as a testament to thorough care and attention to detail.

A haven within a prestigious community, this home offers a superior living experience, blending modern conveniences with tranquillity. Explore the charm and sophistication of this residence, where every detail has been curated to surpass every expectations.



**Kiarna Odgers**  
0406 730 232

Features include:



SITE PLAN  
(NOT TO SCALE)



## 11 Scanlon Street, Aintree

DISCLAIMER : ALL DIMENSIONS ARE AN APPROXIMATION ONLY AND NO GUARANTEE IS GIVEN WITH RESPECT TO ACCURACY.