



## 17 Byahamee Street Rye VIC

3 1 5

Nestled in a peaceful pocket of Rye, Byahamee presents an exciting opportunity for those seeking a solid foundation with future potential. Set on a generous allotment of approximately 782m<sup>2</sup>, this three-bedroom, one-bathroom brick home features neat, original interiors with fresh updates, including new carpets and curtains. The timber-lined ceiling with exposed beams adds character and warmth, while the inviting open fireplace with an exposed brick hearth creates a cosy focal point, all year round.

Further features include wall heaters in all bedrooms, new retaining walls and fences, split system air conditioning, plus a retro inspired bathroom and kitchen.

With a spacious block size and plenty of room to move, there is ample opportunity to further improve or modernise

**Price** : \$ 830,000  
**Land Size** : 782 sqm  
**View** : <https://www.ypa.com.au/8144026>



**Jade Springer**  
0437 410 791

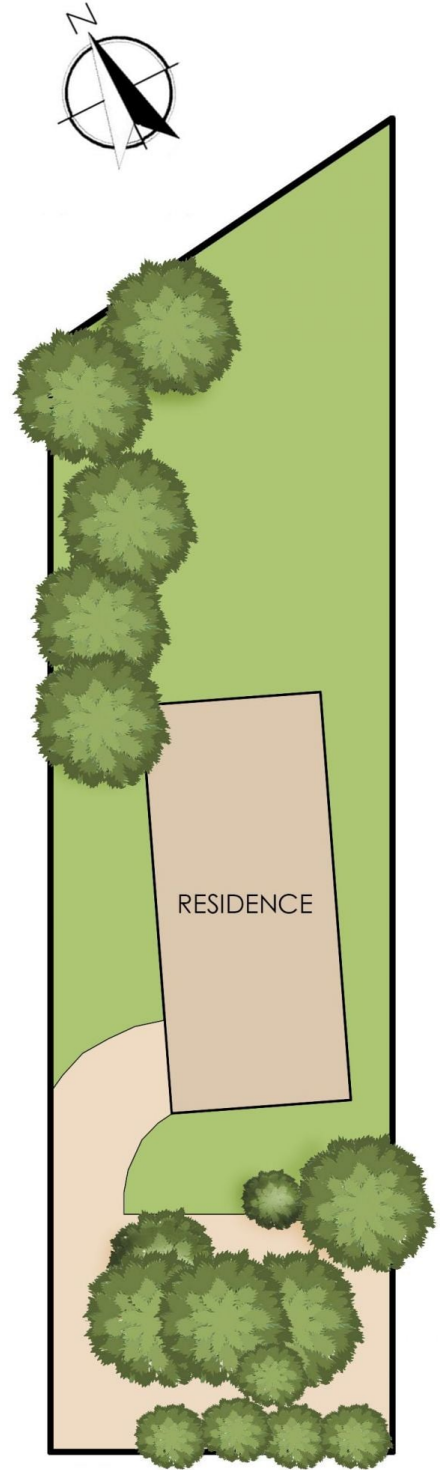
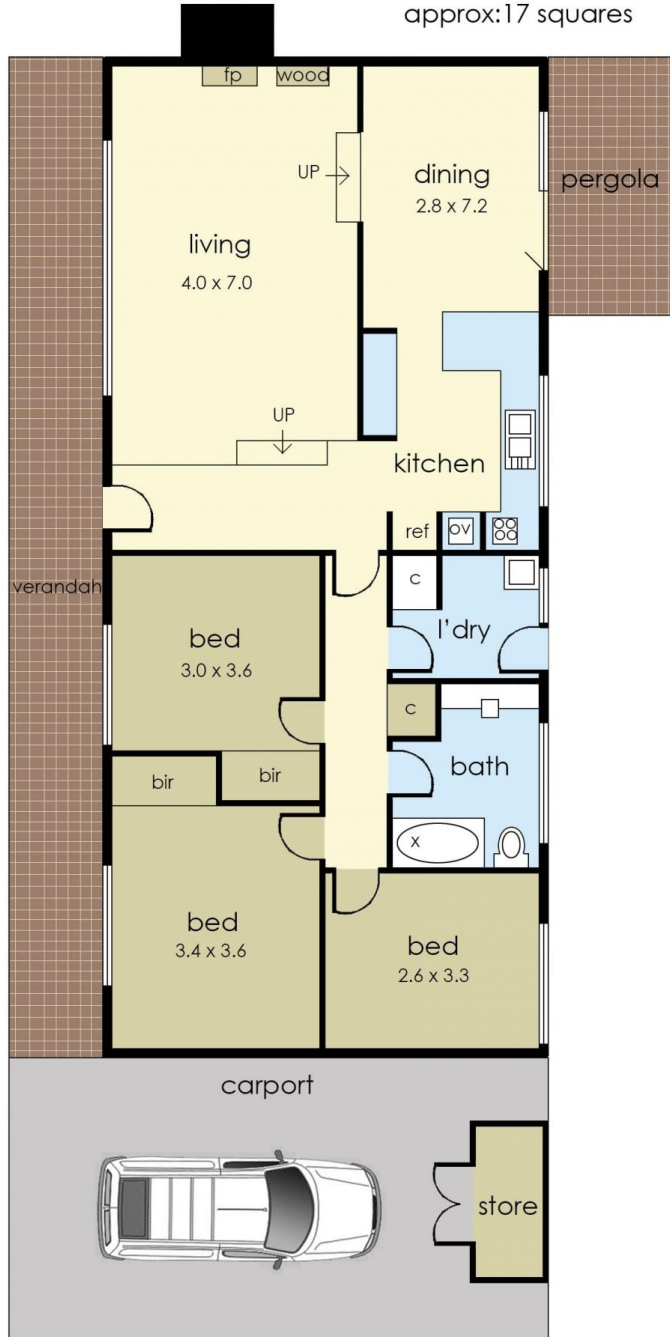


**Kelsie Janssen**  
0417245204

Internal living area  
approx: 14 squares

Carport area  
approx: 3 squares

Total area  
approx: 17 squares



## 17 Byahamee Street, Rye

© Produced by DND Floor Plans

This floorplan is for illustration purposes only and no warranty is given to its accuracy. Purchasers are advised to carry out their own investigations.