

## 4 Equality Street Clyde North VIC

4  2  2 

Nestled on Equality Street in the vibrant suburb of Clyde North, this delightful 4-bedroom, 2-bathroom home offers an excellent opportunity for families looking to settle in a thriving community. The property boasts a spacious layout with modern amenities, including efficient heating and refrigerated cooling to ensure comfort throughout the year. The double garage provides ample space for vehicles and storage.

**Price** : \$ 690,000

**View** : <https://www.ypa.com.au/8138755>

You're just at short distance from esteemed schools like Clyde Grammer, Hillcrest Christian College, Rivercrest Christian College, and short drive to Tulliallan Primary School, as well as the bustling St Germain Shopping Centre.



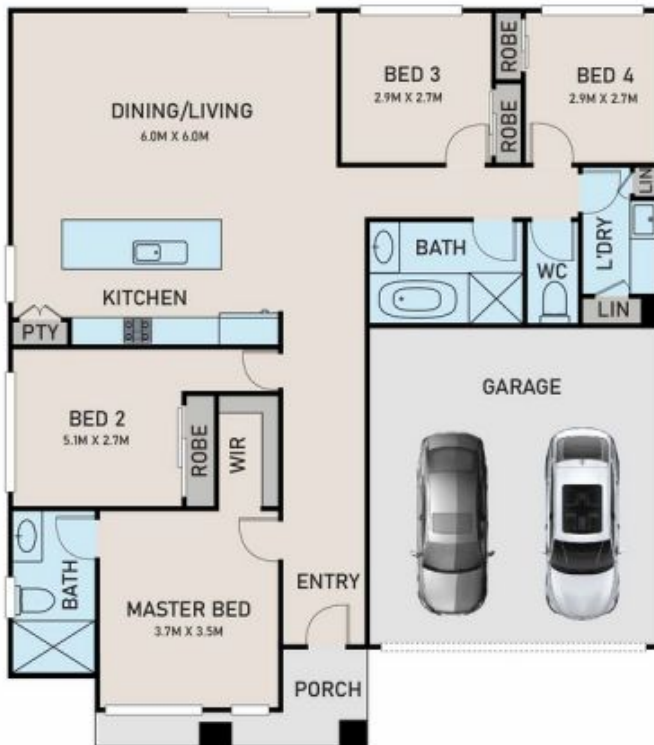
**Kamaljeet Singh**  
0433 619 387



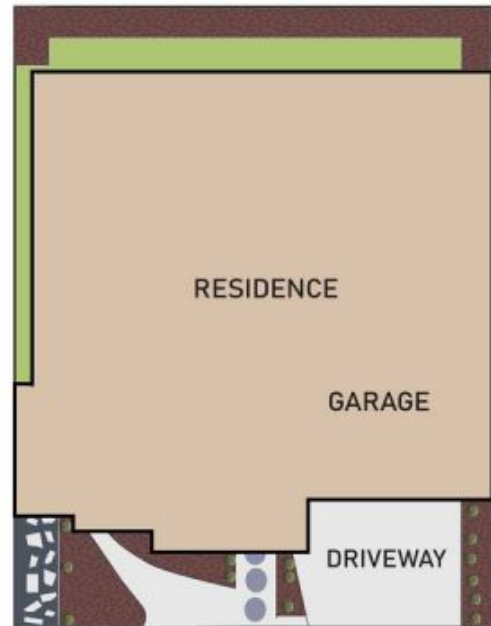
**Rajiv Ranjan**  
0413 775 214

With Berwick Railway Station just minutes' drive away, you're perfectly positioned for a lifestyle of convenience

## FLOOR PLAN



## SITE PLAN



ypa



## 4 EQUALITY STREET, CLYDE NORTH

FLOOR AND SITE PLAN IS FOR ILLUSTRATIVE PURPOSES ONLY AND NOT TO SCALE. THE VENDOR, AGENCY OR SUPPLIER MAKE NO GUARANTEE, WARRANTY OR REPRESENTATION AS TO THE ACCURACY OF ANY INFORMATION CONTAINED HEREIN AND THE COMPLETENESS OF THE FLOOR PLANNED WILL ACCEPT NO LIABILITY FOR ITS ACCURACY. INTERESTED PARTIES ARE ADVISED TO MAKE THEIR OWN INDEPENDENT ENQUIRIES.