



84 Valley Drive Rye VIC

3 1 2

Enjoying an elevated position and peaceful surroundings, this lovely timber beach house offers much more than just a place to rest your head.

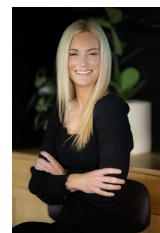
Offering three good sized bedrooms, one bathroom, a modern kitchen, and a spacious undercover outdoor entertaining area - the home is both comfortable and functional and would suit those looking for a ready made investment, cool beach house, or first step on the property ladder.

Located just minutes to the vibrant atmosphere of Rye Village and Foreshore, from this superb position you are spoilt for choice! Whether you enjoy hiking the nature trails of the Mornington Peninsula National Park, surfing at Gunnamatta, enjoying a massage at Alba, or a round of golf at The Dunes - your dream Peninsula lifestyle awaits at

Price : \$ 700,000
Land Size : 643 sqm
View : <https://www.ypa.com.au/8130653>



Tony Talarico
0420 778 401



Katrina Talarico
0420 778 404