



## 6 Selby Court Hopetoun Park VIC

5 🏠 2 🚗 5 🚗

Presiding in the ever popular Hopetoun Park and sitting in close proximity to Melton and Bacchus Marsh via the direct Western Freeway access, this property showcases the very essence of what this fantastic area of the West has to offer. Sitting on a mouthwatering 9,747m2(approx.) this home truly hosts something for everyone, whether you be a car enthusiast, avid animal keeper, or a large and growing family this property at 6 Selby Court ticks all the boxes.

Upon entering you will immediately notice the space on offer, enough for all to utilise and enjoy, the country style facade welcomes you with a sense of warmth inviting you into your new haven. As you walk through the door you are immediately met with the huge formal lounge, providing space for the whole family to use or to entertain any and all guests. This is complimented by the well-appointed office/study, giving you the option to turn it into a sixth

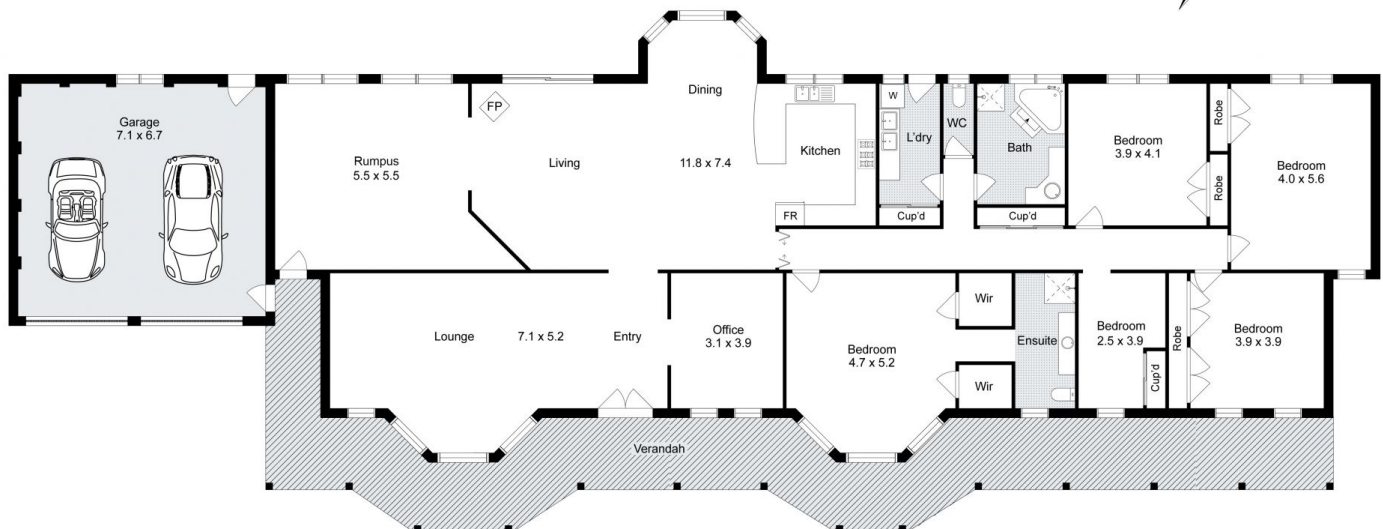
**Price** : \$ 1,380,000  
**Land Size** : 9747 sqm  
**View** : <https://www.ypa.com.au/8129379>



**Shane Spiteri**  
0488 980 115



**Kate McGlone**  
0401 853 244



## 6 Selby Court, Hopetoun Park

Whilst every attempt has been made to ensure the accuracy of the floor plan contained here, measurements of doors, windows, rooms and any other items are approximate and no responsibility is taken for any error, omission, or mis-statement. This plan is for illustrative purposes only and should be used as such by any prospective purchaser. The services, systems and appliances shown have not been tested and no guarantee as to their operability or efficiency can be given.

