



## 10 Leila Court Bacchus Marsh VIC

3 1 3

Looking for more space? This property has it all, nestled in a quiet pocket of Bacchus Marsh! Featuring a three-car garage complete with a large workshop, this home is perfect for those needing extra room for vehicles, tools, or hobbies. The spacious backyard offers plenty of room for outdoor activities, while side access makes it easy to store trailers, boats etc...

Inside the three bedroom home, it has seen several updates, including a modernized kitchen with new appliances, and an updated bathroom featuring a large bath for relaxation. New flooring adds a fresh touch throughout the home, making it move-in ready. Additional features include a split system for heating and cooling, a cozy wood Coonara fireplace, an alarm system for peace of mind, LED lighting, and some new fencing for added privacy.

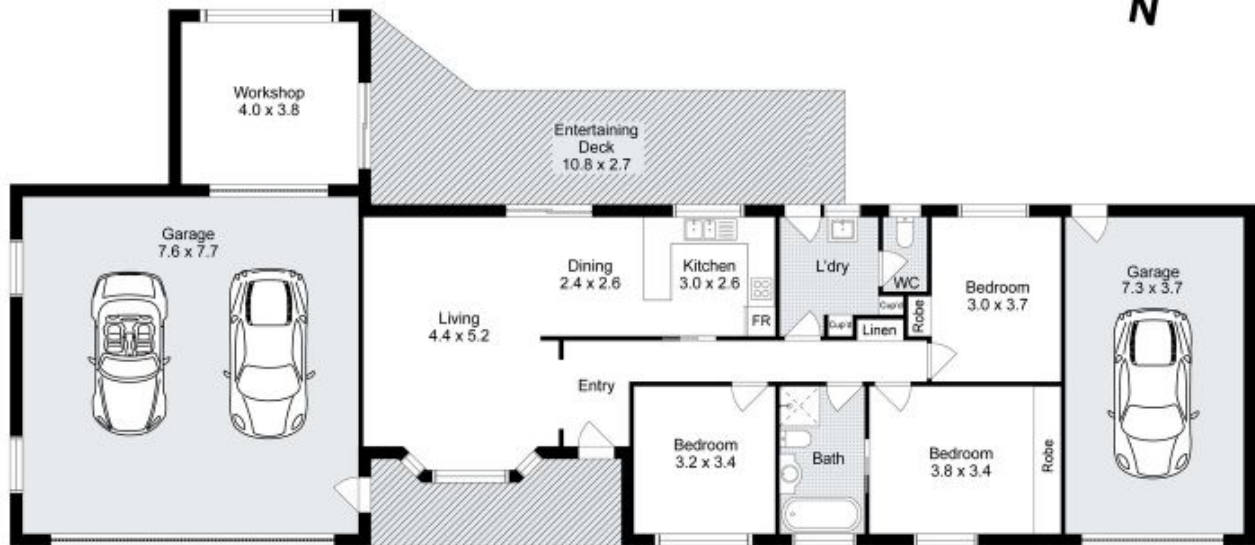
**Price** : \$ 590,000  
**Land Size** : 790 sqm  
**View** : <https://www.ypa.com.au/8128722>



**Jodi Nash**  
0419 342 120



**Costa Rodriguez**  
0484 134 841



## 10 Leila Court, Bacchus Marsh

Whilst every attempt has been made to ensure the accuracy of the floor plan contained here, measurements of doors, windows, rooms and any other items are approximate and no responsibility is taken for any error, omission, or mis-statement. This plan is for illustrative purposes only and should be used as such by any prospective purchaser. The services, systems and appliances shown have not been tested and no guarantee as to their operability or efficiency can be given.

