



5 Connor Place Hoppers Crossing VIC

3 2 2

Located in a convenient court position with so many amenities close by, this stunning home has been recently renovated and offers both comfortable and convenient living. It is Located within the Cambridge school zone and only a short 3 minute drive to Pacific Werribee Shopping Centre this home is ideal for any young family, first home buyers or investors alike. Within walking distance, you also have Parklands, local shops & bus stops making life that little bit easier. Situated on an allotment of approximately 438m2 this home is sure to impress all potential buyers looking! Offering the next homeowner.

Price : \$ 620,000
Land Size : 438 sqm
View : <https://www.ypa.com.au/8124742>



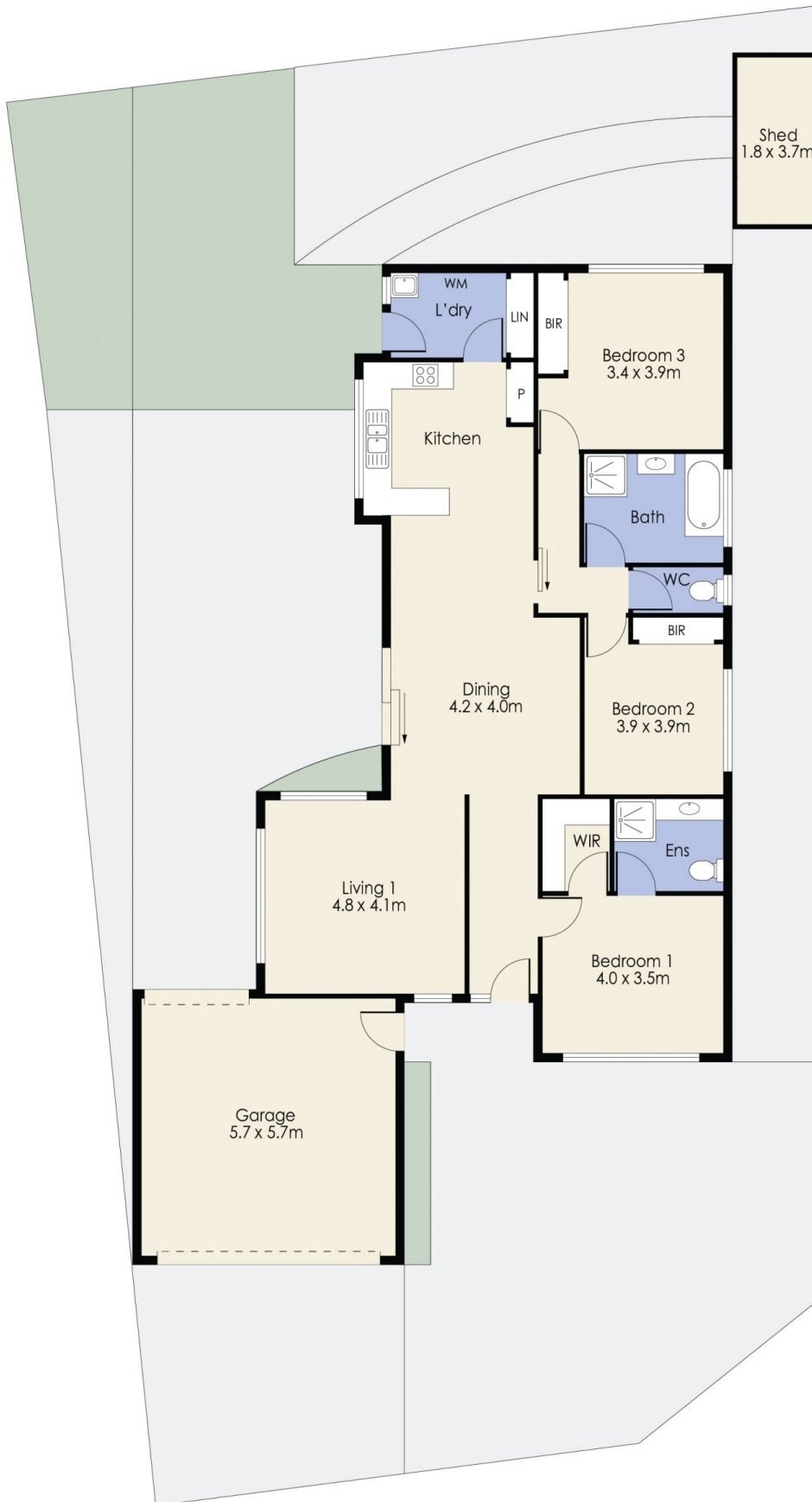
James Christou
0450 733 302



Abdul Merabi
0424 263 506

- ? Master bedroom with walk in robe and ensuite
- ? Two bedrooms with built in robes
- ? Central bathroom with separate toilet
- ? Large living room at the front of the property

5 Conor Place, HOPPERS CROSSING



Whilst every attempt has been made to ensure the accuracy of the floor plan contained here, measurements of doors, windows, rooms and any other items are approximate and no responsibility is taken for any error, omission, or mis-statement. This plan is for illustrative purposes only and should be used as such by any prospective purchaser. The services, systems and appliances shown have not been tested and no guarantee as to their operability or efficiency can be given.