



## 4 Cashmere Court Wyndham Vale VIC

4 2 1

This recently refurbished 4 Bedroom home is situated in a very central and convenient location. Sitting on Approximately 716sqm which is land you just don't see in new estate, you are within close proximity to Local Shops, Presidents Park, Eagle Stadium, Iramoo Primary School, Bus Stops and only approximately 2.9km from Wyndham vale train station and 4km to Werribee CBD & Train Station.

**Price** : \$ 580,000

**Land Size** : 712 sqm

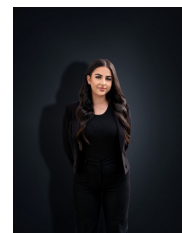
**View** : <https://www.ypa.com.au/8120687>

With a modern floorplan, this home is sure to appeal to all astute buyers and is sure to impress with it's long list of features:

- ? Master Bedroom with ensuite and built in robe
- ? Remaining 3 Bedrooms all fitted with built in robes
- ? Multiple living areas including dining and lounge areas
- ? Updated Central Bathroom with separate toilet
- ? Spacious kitchen with ample cupboard spaces and



**James Christou**  
0450 733 302



**Stefanie Zahra**  
0406871722

# 4 Cashmere Court, WYNDHAM VALE



Whilst every attempt has been made to ensure the accuracy of the floor plan contained here, measurements of doors, windows, rooms and any other items are approximate and no responsibility is taken for any error, omission, or mis-statement. This plan is for illustrative purposes only and should be used as such by any prospective purchaser. The services, systems and appliances shown have not been tested and no guarantee as to their operability or efficiency can be given.