



2/10 Stamford Grove Caroline Springs VIC

3 2 2

Introducing a stunning family home that embodies the perfect combination of location, amenities and versatile living spaces. Situated in a desirable pocket of Caroline Springs, this property offers everything you could dream of. Let's explore the features that make this home truly exceptional.

Features Include:

- ? Master bedroom showcasing a walk-in wardrobe, study, AC unit and ensuite with double vanity and quality fittings
- ? Additional two spacious bedrooms with built-in wardrobes
- ? Front formal lounge
- ? The open plan kitchen is located perfectly to incorporate the meals and family area with AC unit
- ? Kitchen complete with ample cupboard space, stainless steel appliances including gas cooktop, electric oven, range hood, double sink and dishwasher

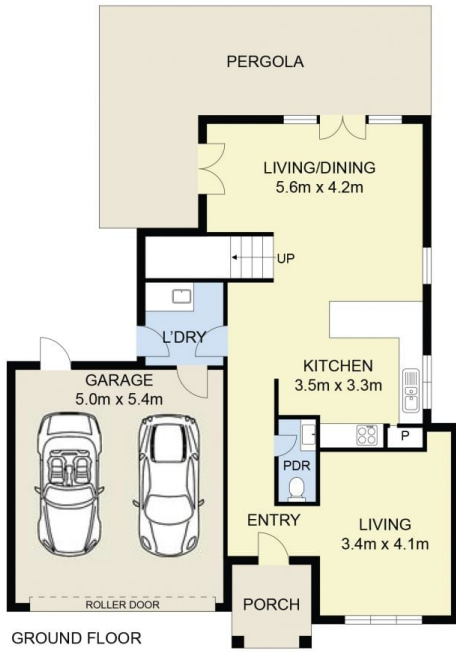
Price : \$ 596,000
Land Size : 209 sqm
View : <https://www.ypa.com.au/8119066>



Andrew Migliorisi
0432 526 844



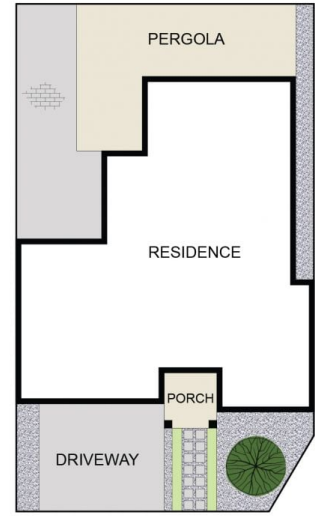
Stephen Azzopardi
0402 012 554



GROUND FLOOR



FIRST FLOOR



SITE PLAN
(NOT TO SCALE)

2/10 Stamford Grove, Caroline Springs



DISCLAIMER : ALL DIMENSIONS ARE AN APPROXIMATION ONLY AND NO GUARANTEE IS GIVEN WITH RESPECT TO ACCURACY.