



56 Walton Street Melton South VIC

3 2 2

Located in the desirable Melton South, this property sits within close proximity to all levels of schooling, parks, freeway access, Melton South & Opalia Shopping Centre, Melton South and Cobblebank Train Stations. Creating an ideal place to call home for first home buyers, downsizers or any savvy investors.

As you enter through the front door you are met with the main bedroom, featuring floor to ceiling sheers, ceiling fan, walk in robe and a stunning ensuite which boasting stone benchtops, double vanity and a larger shower. Moving up the spacious hallway you will find the large theatre room, providing the perfect getaway for the family to enjoy movie night or be used as a kid's toy room!

The kitchen, hosts hybrid floorboards, 40mm stone benchtops, undermount sink, upgraded tapware, pendent

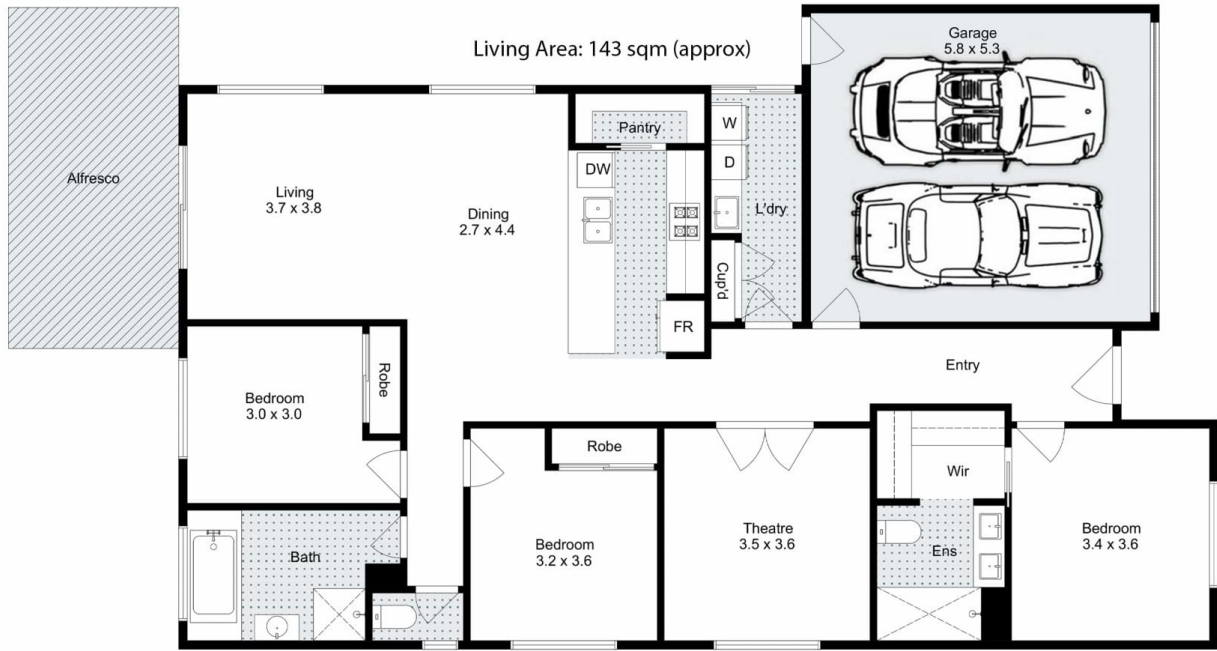
Price : \$ 595,000
Land Size : 312 sqm
View : <https://www.ypa.com.au/8115351>



Shane Spiteri
0488 980 115



Ricky Frew
0402 007 100



56 Walton Street, Melton South

Whilst every attempt has been made to ensure the accuracy of the floor plan contained here, measurements of doors, windows, rooms and any other items are approximate and no responsibility is taken for any error, omission, or mis-statement. This plan is for illustrative purposes only and should be used as such by any prospective purchaser. The services, systems and appliances shown have not been tested and no guarantee as to their operability or efficiency can be given.