



6 Bunya Drive Brookfield VIC

5 🛏 2 🚿 2 🚗

Nestled on a spacious 606m² (approx.) lot in one of Brookfield's most charming and sought-after neighbourhoods, this property is a must-see for buyers. With close proximity to parks, shops, walking trails, public transport, and zoned schools, as well as access to the Brookfield Community Centre's gym, pools, and tennis courts, this home provides an ideal setting for family life and a fantastic opportunity to experience the best of the Brookfield community.

The quality is evident from the moment you pull up out the front of the property with the bold façade and stunning landscaping leading you to the front door of this beautiful home. Upon entry you are met with high ceilings, feature tray ceilings, and gorgeous floorboards that flow throughout.

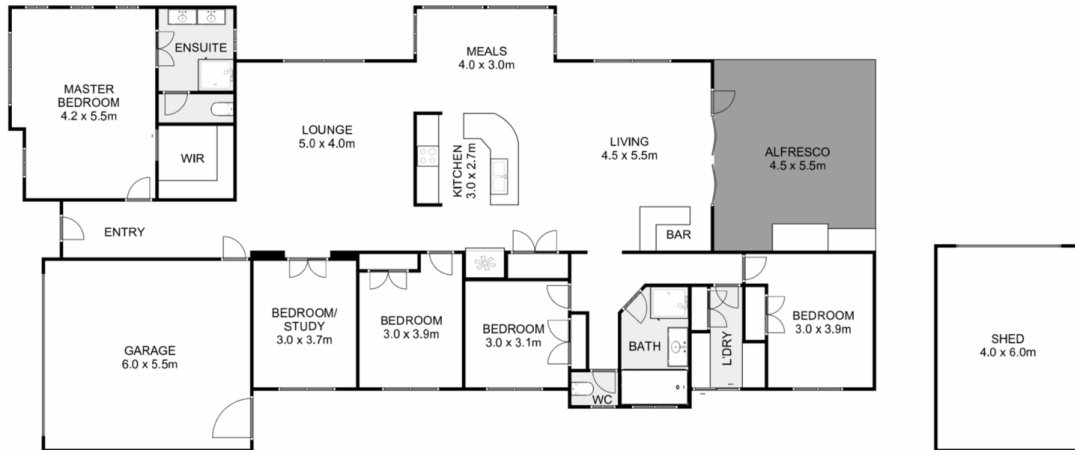
Price : \$ 740,000
Land Size : 606 sqm
View : <https://www.ypa.com.au/8111092>



Shane Spiteri
0488 980 115



Tahlia Hall
0422 419 589



6 Bunya Drive, Brookfield

YPA

Whilst every attempt has been made to ensure the accuracy of the floor plan contained here, measurements of doors, windows, rooms and any other items are approximate and no responsibility is taken for any error, omission, or mis-statement. This plan is for illustrative purposes only and should be used as such by any prospective purchaser. The services, systems and appliances shown have not been tested and no guarantee as to their operability or efficiency can be given.

