

## 23 Gleneagles Drive Melton West VIC

4 🏠 2 🚗 2 🚗

In the heart of Melton West sits this rare opportunity to secure a stunning home in a family-friendly pocket on a huge allotment of 996m<sup>2</sup>(approx.) close by to all amenities including schooling of all levels, childcare, parks, public transport, shops and easy access to Woodgrove Shopping Centre and freeway access. Solidly built and well cared for since its establishment, this family home is sure to impress.

This warm and welcoming home showcases amazing space on offer for a growing family with a huge living area upon entry. Adjacent to the formal living area is the spacious master bedroom, flooded with natural light and offering both a walk-in robe and bright ensuite. The three remaining bedrooms are spacious including the fourth bedroom being so big it offers it's own study/retreat space. While all the bedrooms boast built-in robes and are serviced by the central bathroom and separate toilet.

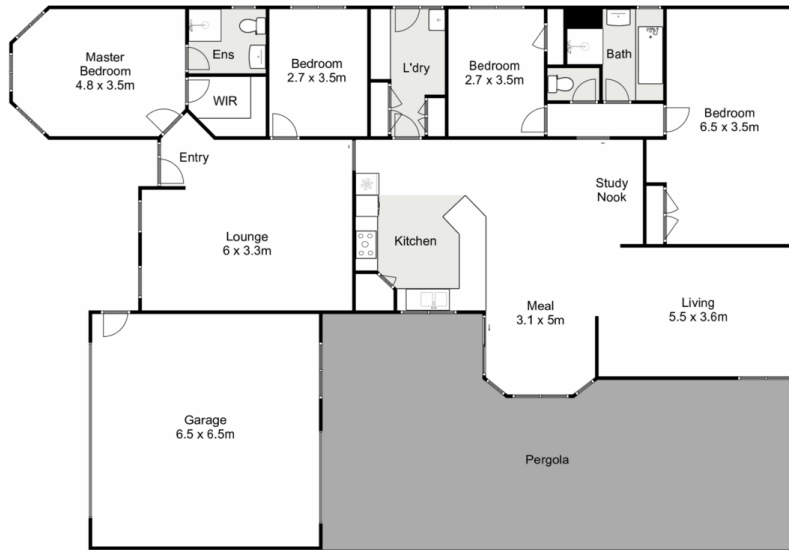
**Price** : \$ 680,000  
**Land Size** : 998 sqm  
**View** : <https://www.ypa.com.au/8103490>



**Monty Tyagi**  
0435 896 907



**Tahlia Hall**  
0422 419 589



## 23 Gleneagles Drive, Melton West

Ypa

Whilst every attempt has been made to ensure the accuracy of the floor plan contained here, measurements of doors, windows, rooms and any other items are approximate and no responsibility is taken for any error, omission, or mis-statement. This plan is for illustrative purposes only and should be used as such by any prospective purchaser. The services, systems and appliances shown have not been tested and no guarantee as to their operability or efficiency can be given.

