



32 Perkins Avenue Hoppers Crossing VIC

3 1 1

Situated on a great sized 580m (approx) allotment and located within close proximity to Hogans Corner Shopping Centre, Pacific Werribee Shopping Centre, schools, childcare facilities and public transport.

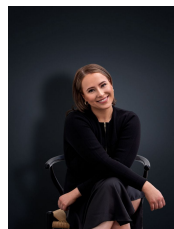
View : <https://www.ypa.com.au/8100847>

Property features include:

- ? 3 bedrooms with built in robes
- ? Central bathroom
- ? Good sized lounge room with vaulted ceiling
- ? Large under cover outdoor entertaining area

Extra features: ceiling fan in the lounge room and bedroom 1, central heating, air conditioning, gas stove top cooking and storage shed.

Disclaimer: The property is accepted as is at the start of the



Ali Dowling
03 9741 7777