



## 4 Hillview Street Dromana VIC

4 2 2

This solidly built brick home is situated in a quiet non-drive thru court location with direct walking access to the Hillview Community Reserve with its BBQ facilities, the leash free area, the lake, access to the State Park Hiking & BMX tracks as well as the Boundary Road Coffee- and Speciality shops across the road from there.

**Price** : \$ 1,190,000  
**Land Size** : 567 sqm  
**View** : <https://www.ypa.com.au/8080049>

### Featuring:

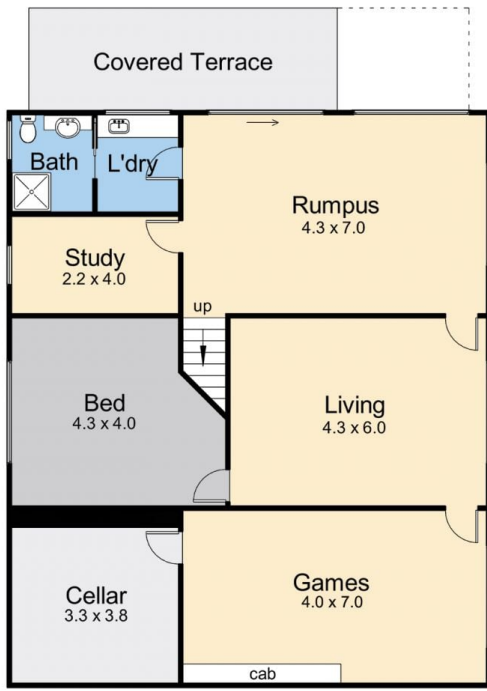
? Amazing bay views during the day, spectacular lights at night

? Four generous bedrooms PLUS study / home office

? Numerous living areas on both levels catering for everyone in the family, great separate areas for games and/or relaxation

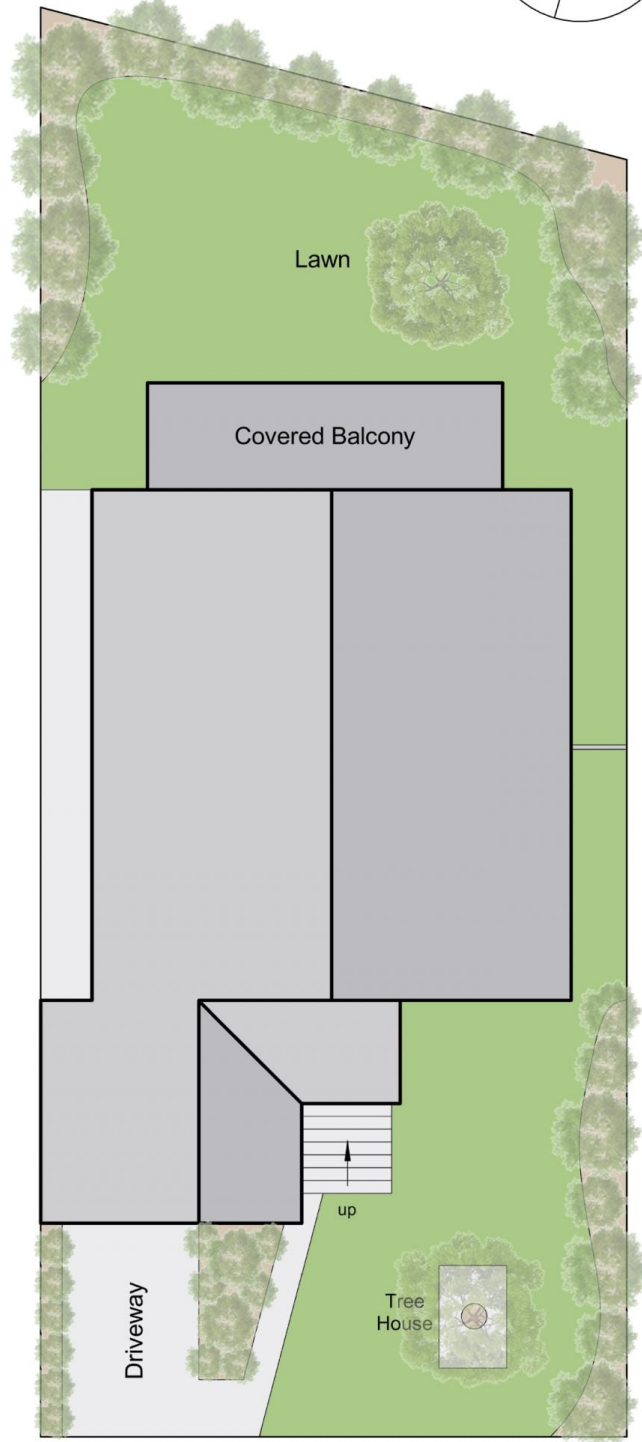
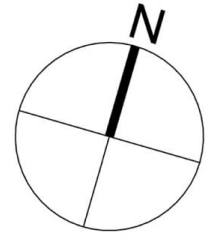


**Elke Remscheid**  
0423 211 315

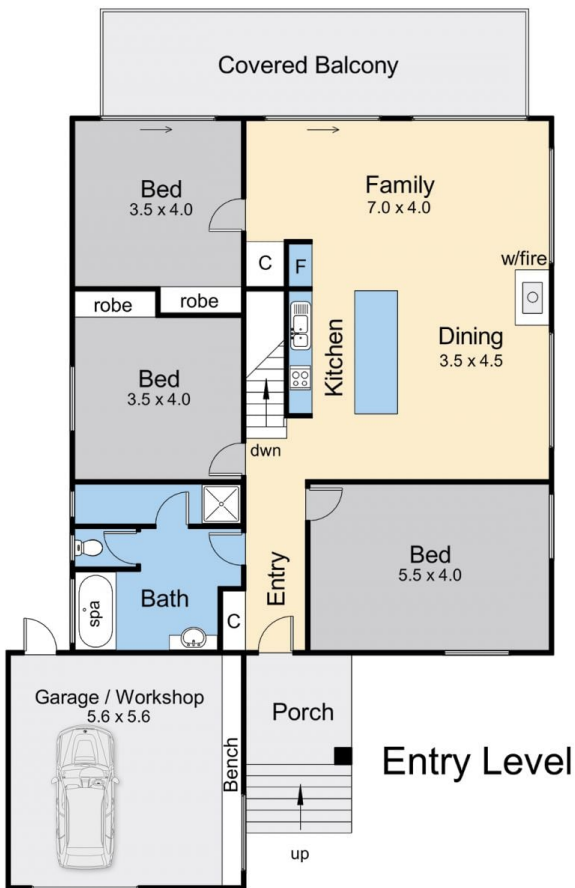


Lower Floor

Internal area = 30.2 squares (approx)  
 Garage area = 3.8 squares (approx)  
 External area = 5.4 squares (approx)  
 Total area = 39.4 squares (approx)



Site Plan



Entry Level

## 4 Hillview Street, Dromana