



5 Bexley Close Werribee VIC

4 2 2

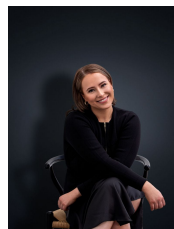
Here we have this large family home which offers an abundance of space for the entire family to be comfortable. Located in the heart of Werribee you are close to local shops, public transport, Presidents Park, Eagle Stadium and Manorvale Primary School.

View : <https://www.ypa.com.au/8056310>

Property features include:

- ?Four generously sized bedrooms, master featuring a walk in robe and en-suite
- ?The kitchen offers an abundance of bench and cupboard space adjacent to the open plan living and meals area
- ?Secondary living and formal dining/sitting area upon entry
- ?Updated central bathroom with separate toilet and laundry
- ?Large pergola for all year round outdoor entertaining and a very generous yard for the kids to play in

Extra features: double lock up carport, split system heating



Ali Dowling
03 9741 7777



Siteplan

Produced by DIAKRIT

The site plan and floor plan are not to scale; measurements are indicative and in metres. Bushes and trees are placed for illustration purposes.