



13 Anne Drive Dromana VIC

5 3 3

Offered at an incredible entry level price, this exceptional family home located in the most sought-after location in Dromana will be sure to excite even the most discerning buyer!

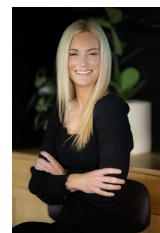
Perched high up on coveted Dromana Hill, this impressive family residence features five bedrooms, three bathrooms, and two expansive living rooms, complemented by a spacious kitchen and dining area perfect for entertaining guests.

The home also features a huge self-contained one bedroom, one bathroom ground level apartment with dual entry and independent access - perfect for those seeking in-law accommodation, home office/practice space, secondary primary suite, or guest quarters. This fantastic additional space also enjoys its own north facing private

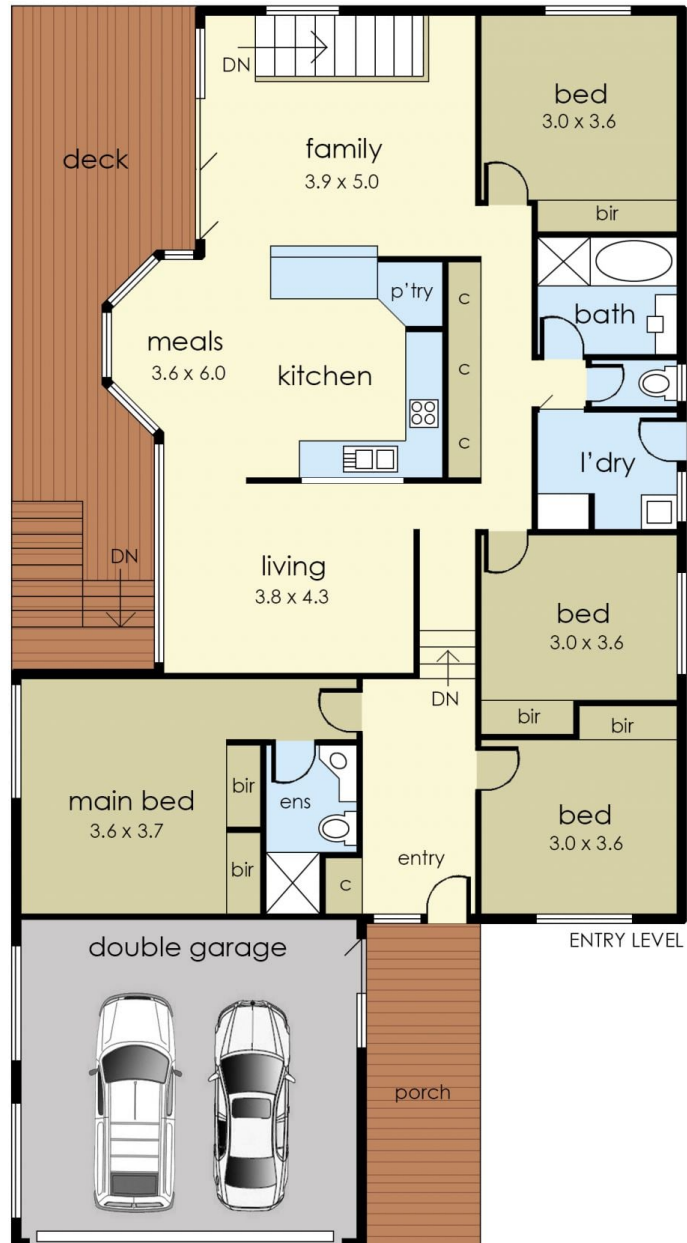
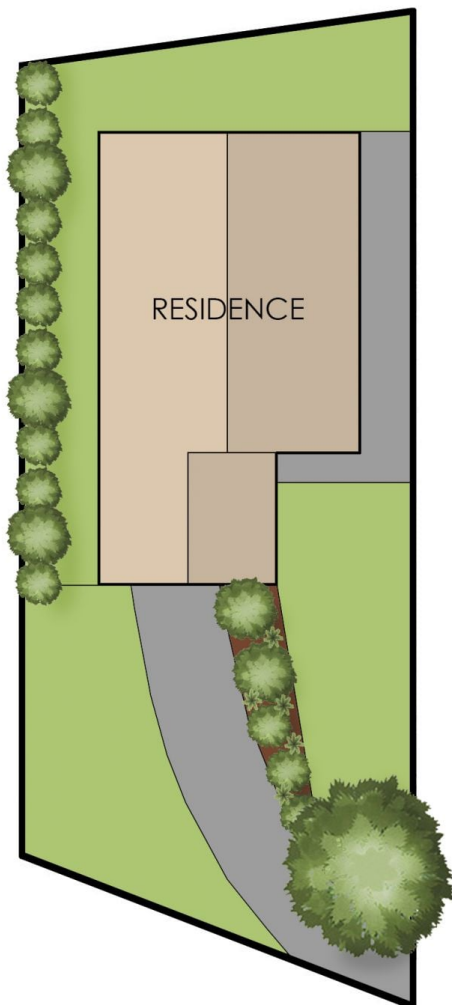
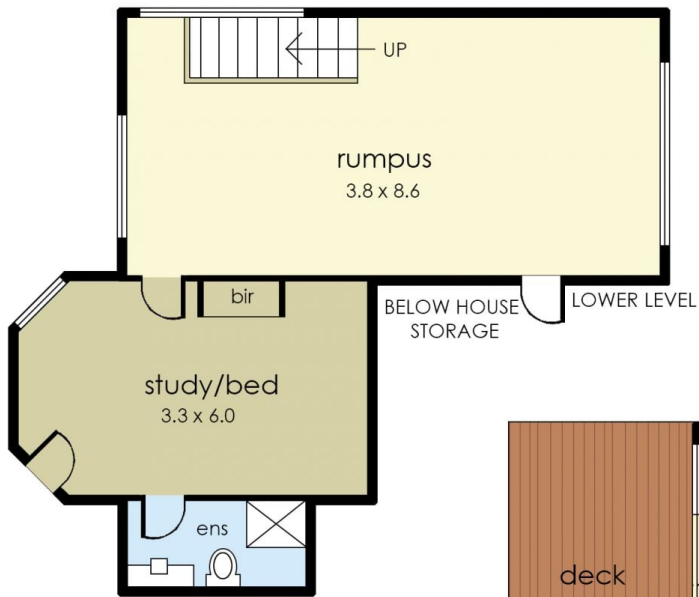
Price : \$ 1,045,000
Land Size : 641 sqm
View : <https://www.ypa.com.au/8055883>



Tony Talarico
0420 778 401



Katrina Talarico
0420 778 404



13 Anne Drive, Dromana

© Produced by DND Floor Plans

This floorplan is for illustration purposes only and no warranty is given to its accuracy. Purchasers are advised to carry out their own investigations.