



15 Alsace Avenue Hoppers Crossing VIC

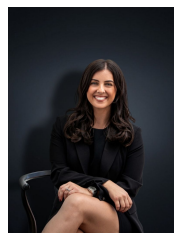
4  2  2 

This large family home is located in a convenient pocket nearby to public transport, shops, parklands and reputable schools including the Grange P-12 & Good News Lutheran College. Additionally, you are only a short drive to Pacific Werribee & Freeway access.

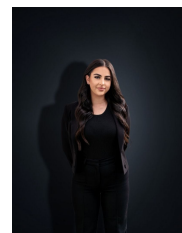
Price : \$ 685,000
Land Size : 665 sqm
View : <https://www.ypa.com.au/8017696>

Offering a large and spacious design, situated on approximately 665 sq m the home offers:

- ? Four spacious bedrooms
- ? Large master bedroom with walk in robe and ensuite
- ? Central bathroom
- ? Formal lounge upon entry
- ? Kitchen / meals area
- ? Massive rumpus room to the rear of the home
- ? Large covered outdoor entertaining area
- ? Double garage with rear access



Kirsty Cunningham
0414 344 475



Stefanie Zahra
0406 871 722



15 Alsace Avenue, Hoppers Crossing

2D FLOOR PLAN

MEASUREMENTS SHOULD BE CONSIDERED AS INDICATIVE ONLY. DEEMED HIGHLY RELIABLE BUT NOT GUARANTEED.