

17 Peters Close Maddingley VIC

3 2 1

This beautiful family home is perfectly located in a highly sought-after area of Maddingley just moments away from all amenities, including public transport, schools of all levels, shops, parklands and the new Maddingley sports precinct.

This wonderful property is a great opportunity to enter the property market or invest.

The home has recently been refreshed with new floor coverings and paint. Stepping into this impressive home you immediately appreciate the space on offer. At the front of the home sits a large master bedroom showcasing ample light featuring a bright ensuite and a spacious walk-in robe. The remaining bedrooms are all generously sized complete with built in robes and are serviced by a bright central bathroom and separate toilet.

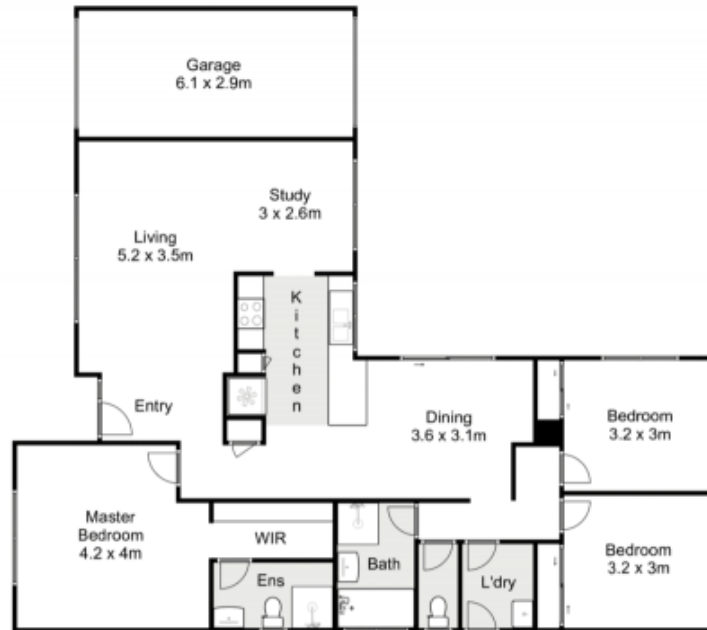
Price : \$ 525,000
Land Size : 718 sqm
View : <https://www.ypa.com.au/8010996>



Shane Spiteri
0488 980 115



Mark Edwards
0422 017 068



17 Peters Close, Maddingley



Whilst every attempt has been made to ensure the accuracy of the floor plan contained here, measurements of doors, windows, rooms and any other items are approximate and no responsibility is taken for any error, omission, or mis-statement. This plan is for illustrative purposes only and should be used as such by any prospective purchaser. The services, systems and appliances shown have not been tested and no guarantee as to their operability or efficiency can be given.

