



22 Burns Close Dromana VIC

5 3 1

This classic NORTH FACING FIVE-BEDROOM home is situated in a quiet court on Dromana Hill. The property offers Magnificent views of Port Phillip Heads around to the Melbourne Skyline.

Land Size : 909 sqm
View : <https://www.ypa.com.au/8006159>

The property features:

- Upstairs - Three Bedrooms, Two Bathrooms, Kitchen, Spacious Living and Sunroom.
- Downstairs - Two Bedrooms, Renovated Bathroom, Kitchenette and Spacious Living.
- Fully fenced backyard to accommodate Boats, caravans and pets.
- Sunroom flows out to the balcony to make the most of the stunning views.
- Plenty of different living options.
- Reverse cycle Air conditioning.



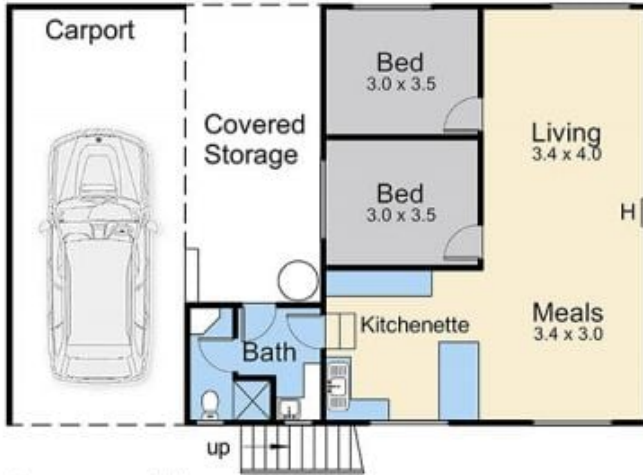
Nancy Crupi
0413 969 284



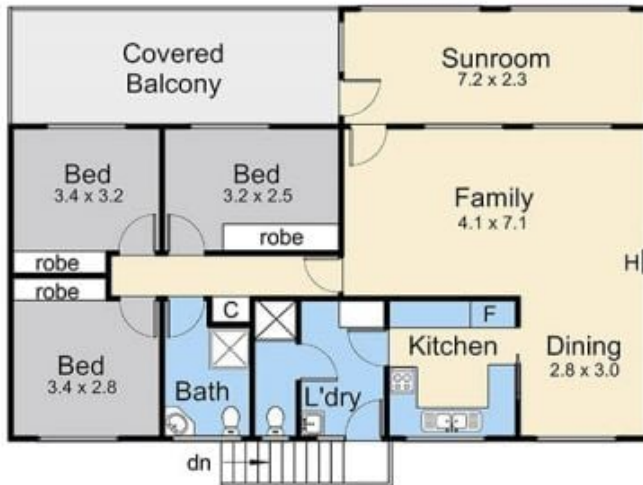
Kate Visser
0406 796 580



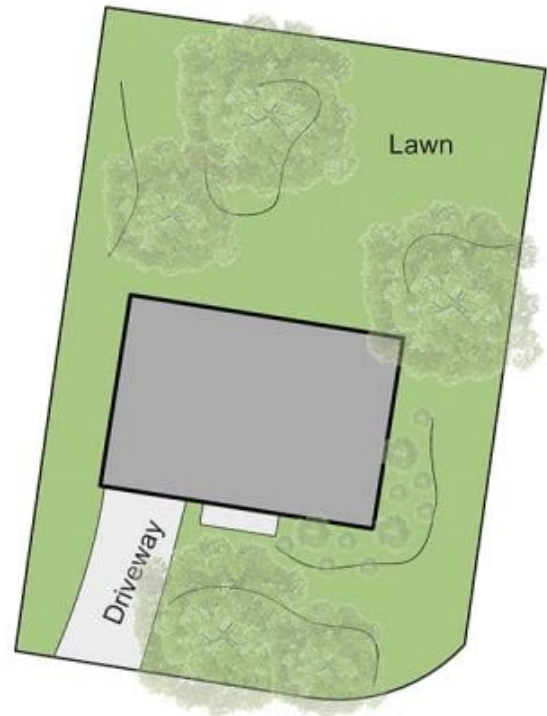
Internal Living Area
20.7 squares



Lower Floor



Upper Floor



Site Plan

22 Burns Close, Dromana

This floorplan is for illustration purposes only and no warranty is given to its accuracy. Purchasers are advised to carry out their own investigations. Produced by **realitywriters** (03) 5970 2222