



84 Clarke Drive Gladstone Park VIC

4  2  4 

Welcome to your perfect home nestled in the heart of Gladstone Park, offering a unique blend of comfort, space, and tranquility.

This exceptional property is not just a house; it's a sanctuary where modern living meets natural beauty.

Featuring four spacious bedrooms, including two on the ground floor and two downstairs, this home is ideal for families seeking space and privacy.

The massive master bedroom boasts a full walk-in ensuite with an open shower/bath, stone top vanity, and a huge walk-in robe complete with an office area - perfect for a home office or study space.

Step into the recently updated second bathroom downstairs

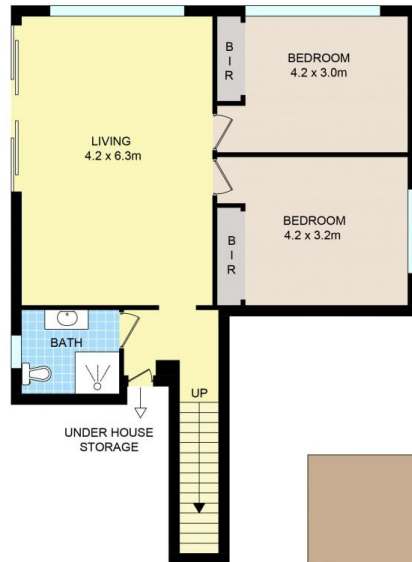
Price : \$ 765,500
Land Size : 550 sqm
View : <https://www.ypa.com.au/8005947>



Alexander Sherriff
0438 212 714

UNDERCOVER
AREA
2.7 x 3.8m
(NOT IN POSITION)

SHED
3.0 x 3.0m
(NOT IN POSITION)



GROUND FLOOR



FIRST FLOOR

84 Clarke Dr, Gladstone Park

Disclaimer: Floor plan is for marketing purposes and is to be used as a guide only. Measurements are approximate and for illustrative purposes. Interested parties should make and rely on their own enquiries or refer to contract drawings for more accurate information.