



22 Brooksby Circuit HARKNESS VIC

4 🚗 2 🚗 2 🚗

Located in the sought-after Willandra Estate in Harkness, this charming property sits in close proximity to schools of all levels, parks, walking tracks and only a short drive to Woodgrove Shopping Centre and Western Freeway Access. With 2 Living areas and lots of inclusions to match, this property ticks all the boxes for young families, first home buyers and investors alike!

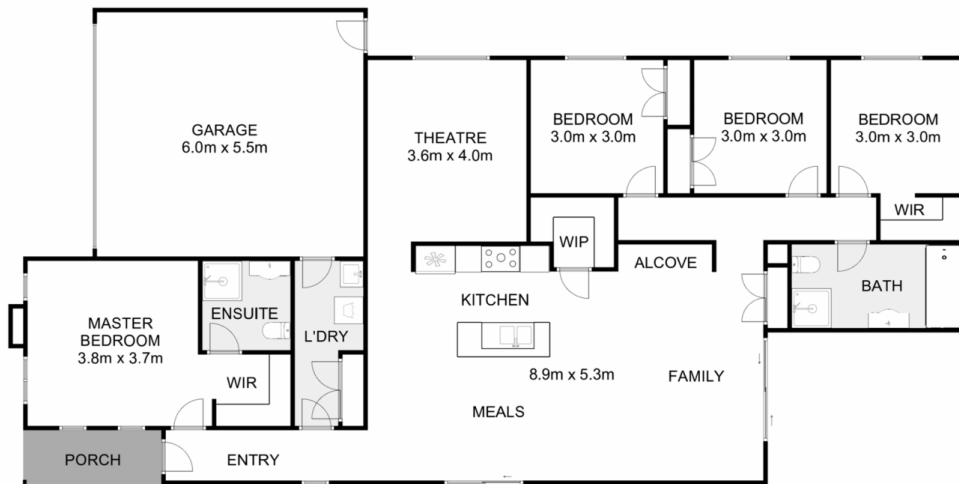
As you drive towards the property, you'll notice its quite location at the end of a family-oriented circuit. Being a corner block it has additional advantages over the neighbouring homes such as much more space for additional cars and extensive privacy in the backyard.

Leading up to the front door you are welcomed by a low maintenance, stunning neat front yard that sets the right tone of what's to be expected from a quality family home.

Price : \$ 625,000
Land Size : 559 sqm
View : <https://www.ypa.com.au/8004156>



Monty Tyagi
0435 896 907



22 Brooksby Circuit, Harkness

ypa

Whilst every attempt has been made to ensure the accuracy of the floor plan contained here, measurements of doors, windows, rooms and any other items are approximate and no responsibility is taken for any error, omission, or mis-statement. This plan is for illustrative purposes only and should be used as such by any prospective purchaser. The services, systems and appliances shown have not been tested and no guarantee as to their operability or efficiency can be given.

