

8 Merlin Street CRAIGIEBURN VIC

3 2 2

Sleek, stylish, and sophisticated. This stunning modern double story home will delight anyone craving contemporary comfort. The property is perfectly positioned with only walking distance to Craigieburn central, schools, public transport as well as parklands at your doorstep!

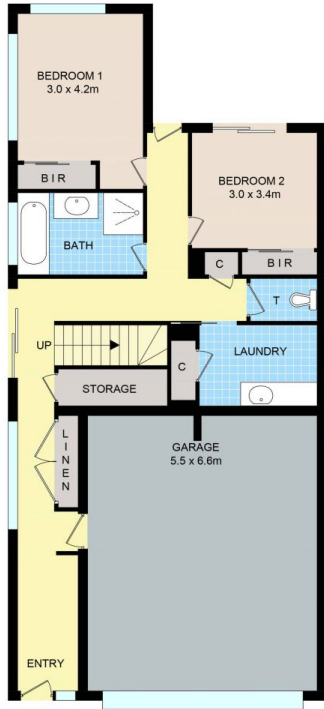
The two-story layout feels instantly spacious and inviting with generous living zones that invite you to relax and unwind. A light-filled lounge room is set on the top floor overlooking to your private balcony overlooking to a lush Parklands.

For the avid cook, there are stone benchtops and 900mm Brand New appliances in the kitchen along with walk in pantry and quality fixtures. Preparing meals in this space will be an absolute pleasure.

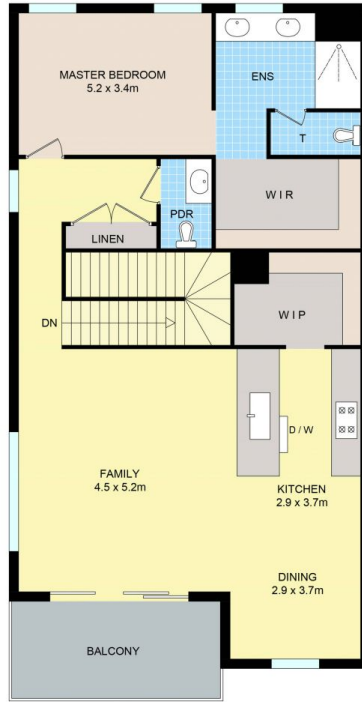
Price : \$ 590,000
View : <https://www.ypa.com.au/8003793>



Wahid Baqi
0434 136 830



GROUND FLOOR



FIRST FLOOR

8 Merlin St, Craigieburn

Disclaimer: Floor plan is for marketing purposes and is to be used as a guide only. Measurements are approximate and for illustrative purposes. Interested parties should make and rely on their own enquiries or refer to contract drawings for more accurate information.