

## 19 Bailey Street Werribee VIC

5 3 2

Occupying a coveted position just minutes away from Watton Street, this custom built bespoke 44sq home offers unparalleled lifestyle excellence, with classic character, exceptional space and the perfect entertainers lifestyle.

Instantly appealing with its traditional façade and private garden this double storey home opens to immaculate presentation and offers 5 bedroom accommodation, both formal and casual living areas that flow into a dine-in kitchen with upgraded appliances and ample cupboard space. Step out to the paved outdoors, where lush established greenery creates a private haven for entertaining.

The custom floor plan offers a versatile design ideal for those with older children including a downstairs main with its beautiful garden-front window and a second princess

**Price** : \$1,250,00 to \$1,375,000  
**Building Size** : 410 sqm  
**Land Size** : 530 sqm  
**View** : <https://www.ypa.com.au/8002832>

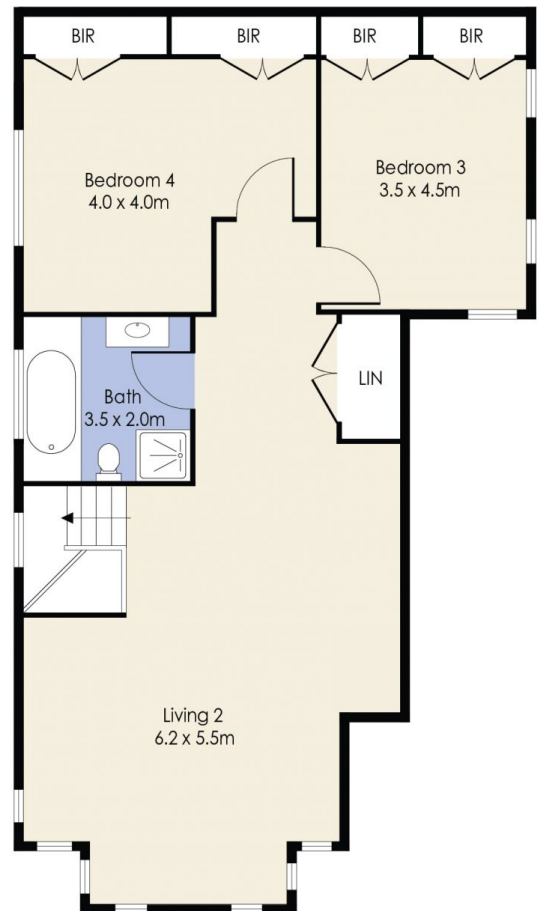
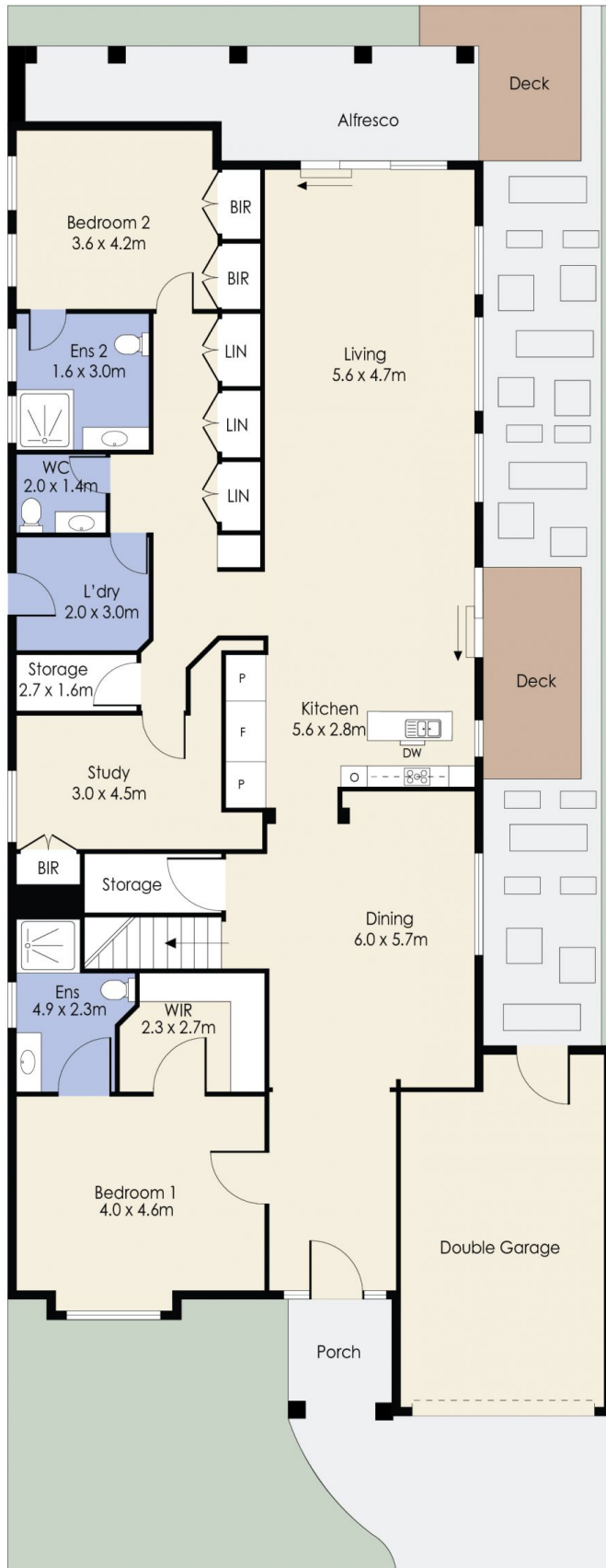


**Mitch Smit**  
0450 913 513



**James Antonio**  
0401 889 248

# 19 Bailey Street, WERRIBEE



Whilst every attempt has been made to ensure the accuracy of the floor plan contained here, measurements of doors, windows, rooms and any other items are approximate and no responsibility is taken for any error, omission, or mis-statement. This plan is for illustrative purposes only and should be used as such by any prospective purchaser. The services, systems and appliances shown have not been tested and no guarantee as to their operability or efficiency can be given.