



3 Spring Close Harkness VIC

5 🏠 2 🚗 6 🚗

Experience the pinnacle of living in this exquisite home, positioned in the prestigious Princeton Park Estate. Set on an expansive 1004m² (approx.) block, this residence offers a lifestyle of unrivalled comfort and convenience.

Immerse yourself in the peaceful surroundings, with Navan Park just a short stroll away. The property is also ideally located within easy reach of respected schools, Woodgrove Shopping Centre, major freeways, and more.

As you step inside, you're greeted by a sense of grandeur that defines every aspect of this home. Featuring four bedrooms with the potential for a fifth or a study, this residence offers versatility to suit your lifestyle. The dual under-roofline garages, comprising a four-car and two-car garage, with two additional workshop areas, cater to the needs of car enthusiasts or hobbyists also providing the potential for future expansion.

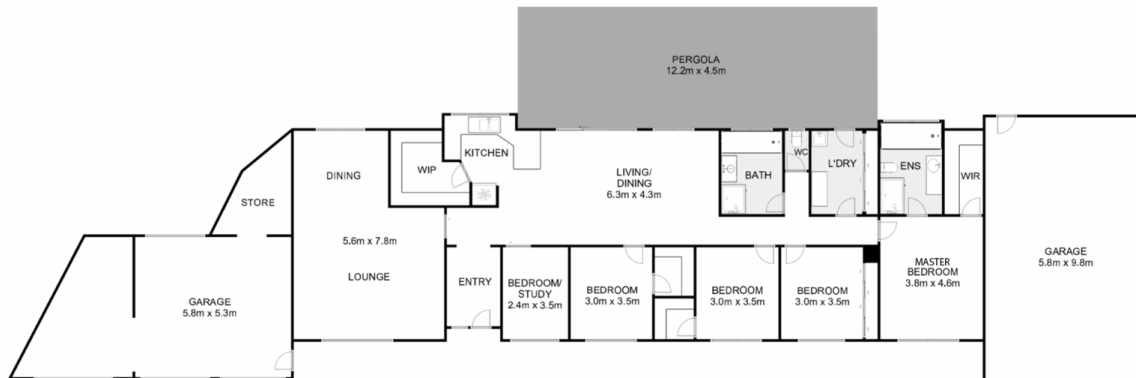
The interior showcases two spacious lounge areas that

Price : \$799,000 - \$859,000

View : <https://www.ypa.com.au/8001842>



Shane O'Brien
0431 766 082



3 Spring Close, Harkness

YPA

Whilst every attempt has been made to ensure the accuracy of the floor plan contained here, measurements of doors, windows, rooms and any other items are approximate and no responsibility is taken for any error, omission, or mis-statement. This plan is for illustrative purposes only and should be used as such by any prospective purchaser. The services, systems and appliances shown have not been tested and no guarantee as to their operability or efficiency can be given.

