



4/219 Watton Street Werribee VIC

2  1  1 

Seize this rare opportunity to reside in a highly sought-after location on Watton Street, a stone's throw from Werribee's vibrant café district, shops, and transport links. This modern two-bedroom ground floor apartment epitomizes convenience and style, offering easy access to Chirnside Park and essential amenities-all within walking distance.

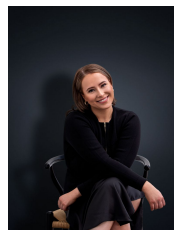
Price : \$410 pw

View : <https://www.ypa.com.au/8001752>

Apartment Highlights:

? Spacious Living: Enjoy a generously sized open-plan living and meals area, seamlessly connected to a modern kitchen equipped with stainless steel appliances, stone benchtops, and ample cupboard space.

? Comfortable Quarters: Two well-appointed bedrooms feature built-in robes and offer direct access to a tranquil rear garden and courtyard, providing a perfect blend of privacy and outdoor enjoyment.



Ali Dowling
0450 778 972