



15 Pagnocolo Street Werribee VIC

3  1  2 

Located in the highly sought after 'Southside of Werribee' region with easy access to all freeways, traffic is eliminated.

Price : \$480 pw

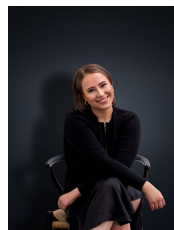
View : <https://www.ypa.com.au/7999701>

Perfectly located in close proximity to but not limited to :-

- Werribee CBD, Cafes, restaurants and shops (3 min drive 1.1KM)
- Werribee secondary school (4min drive 2.2KM)
- Werribee primary school (1min drive 700M)
- MacKillop College (3min drive 1.5KM)
- Werribee train station (5min drive 2.2KM)

Incredibly positioned and zoned for Werribee's most elite schools this home offers;

Three large bedrooms, Central bathroom, Lounge room, Kitchen/Meals area, Loads of off street parking, Outdoor



Ali Dowling
0450 778 972