



5 Red Robin Drive Winter Valley VIC

3  2  2 

Introducing 5 Red Robin Drive, Winter Valley—a captivating residence located in the heart of Ballarat High School zoning. This charming home boasts three generously sized bedrooms set on 525 square meters of prime real estate, perfectly blending comfort with convenience.

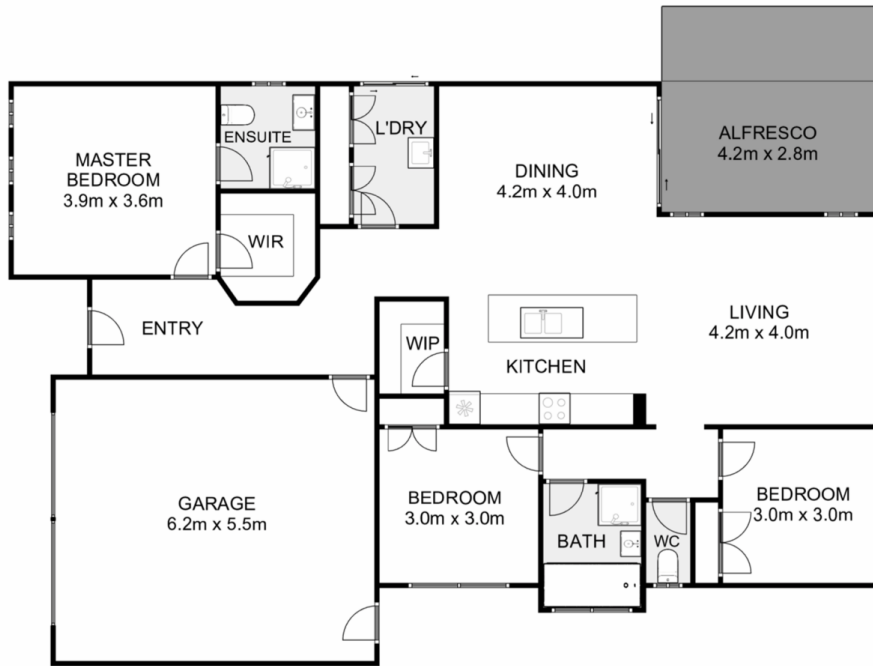
Ideally situated just a short drive away from Delacombe Town Centre and Coltman Plaza, this home offers unparalleled access to a multitude of shopping amenities, ensuring all your needs are catered to with ease. Whether it's a leisurely stroll through the neighbourhood or a quick errand run, every convenience is within reach.

Step inside and discover a harmonious blend of modern living and timeless elegance. From the spacious bedrooms with master featuring ensuite, walk in robe, split system and external roller shutters. The thoughtfully designed

Price : \$519,000 - \$549,000
Land Size : 525 sqm
View : <https://www.ypa.com.au/7999583>



Zac Boland
0439 442 286



5 Red Robin Drive, Winter Valley

Ypa

Whilst every attempt has been made to ensure the accuracy of the floor plan contained here, measurements of doors, windows, rooms and any other items are approximate and no responsibility is taken for any error, omission, or mis-statement. This plan is for illustrative purposes only and should be used as such by any prospective purchaser. The services, systems and appliances shown have not been tested and no guarantee as to their operability or efficiency can be given.

