



## 1/15 Rose Street Capel Sound VIC

4 3 2

Boasting a prime location just 400\*m from the water's edge, this fantastic Southern Peninsula property offers a perfect blend of style, comfort, and convenience.

Built in 2017 and featuring its own street frontage, the contemporary facade features clean lines and a minimal aesthetic complimented by low maintenance landscaping, whilst the modern interiors showcase premium finishes including solid european oak flooring, quality wool blend carpeting, bespoke fitted wardrobes and a custom-fitted office space which offers ample storage and versatility to accommodate your lifestyle needs. Year-round comfort is further ensured through the inclusion of a Daikin integrated heating and cooling system that provides optimal climate control in every season.

**Price** : \$950,000 - \$1,020,000  
**Land Size** : 315 sqm  
**View** : <https://www.ypa.com.au/7998312>

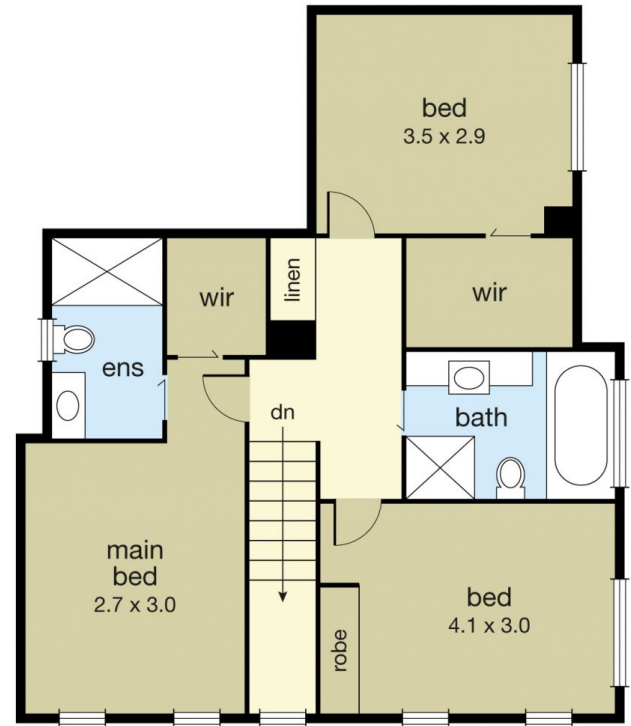
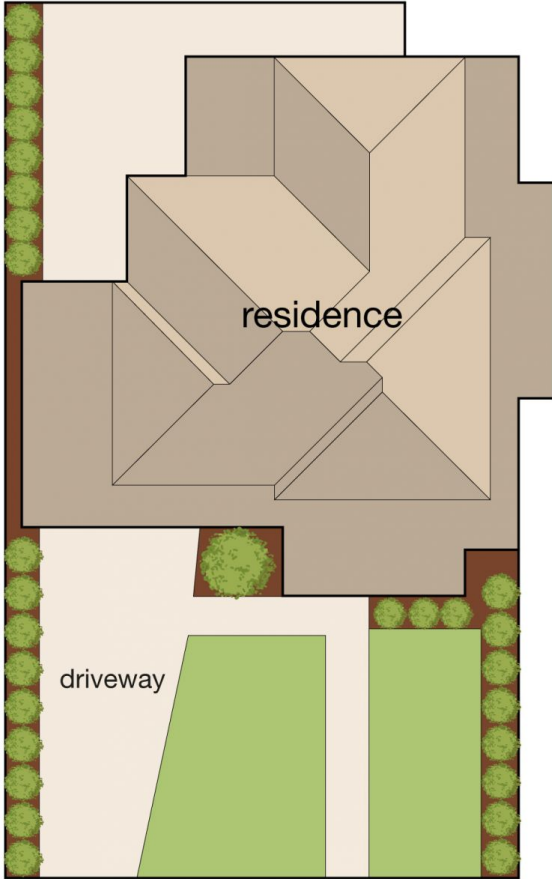
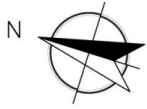


**Jade Springer**  
0437 410 791



**Ben Nutbean**  
0413 125 996

The kitchen is a culinary enthusiast's dream, with Bianca



# 1/15 Rose Street, Capel Sound

This floorplan is for illustration purposes only and no warranty is given to its accuracy. Purchasers are advised to carry out their own investigations.