

## 8 Connel Drive MELTON SOUTH VIC

4 2 1

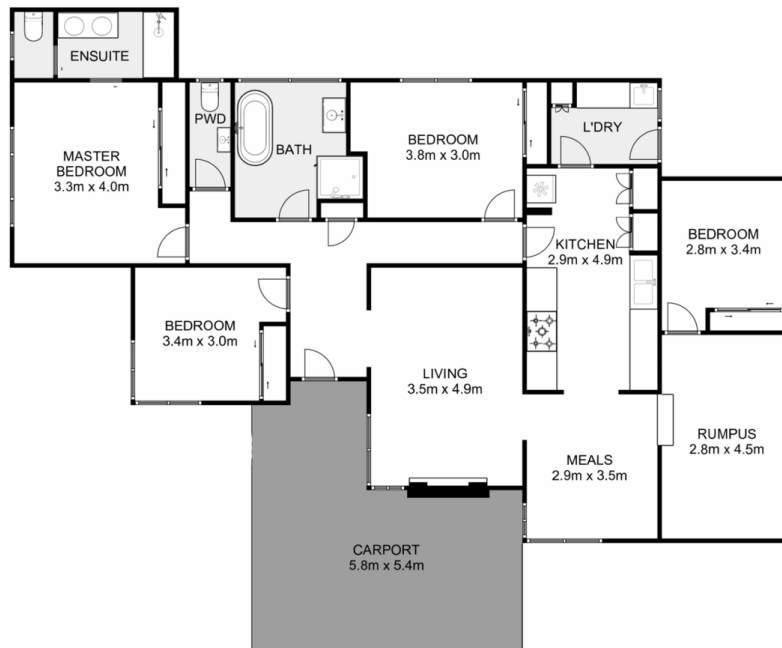
Situated on a large 534m<sup>2</sup> (approx.) allotment and located in a quiet and convenient street, this property is sure to impress all buyers. Being within close proximity to parklands, shopping complexes, walking tracks, public transport, Melton Train Station, and zoned schools, this property offers not only a perfect family living environment but a wonderful area to enjoy all that the beautiful Melton community has to offer. The street is directly situated across from St Anthony's Primary School and Melton South Primary School, only moments away from Staughton College and Al Iman college makes this the ideal home to raise a family or prime investment.

Upon entry you are met with a large inviting living area that offers a warm, comfortable area to enjoy with the family with feature gas fireplace for those chilly winter nights. In the heart of the home, you will find the bright spacious

**Price** : \$ 625,000  
**Land Size** : 529 sqm  
**View** : <https://www.ypa.com.au/7994784>



**Ryan Anders**  
0434 900 300



## 8 Connel Drive, Melton South

YPA

Whilst every attempt has been made to ensure the accuracy of the floor plan contained here, measurements of doors, windows, rooms and any other items are approximate and no responsibility is taken for any error, omission, or mis-statement. This plan is for illustrative purposes only and should be used as such by any prospective purchaser. The services, systems and appliances shown have not been tested and no guarantee as to their operability or efficiency can be given.

