



10 Midfield Way Clyde VIC

4 2 2

Positioned within the coveted Pavilion Estate in Clyde, 10 Midfield Way offers a lifestyle of convenience and leisure, surrounded by popular sports and recreational facilities. This striking modern home melds family-friendly dimensions, fine finishes, and on-trend tones to present an enviable offering tailored to both discerning homeowners and savvy investors.

Enjoy the convenience of living steps away from popular sports and recreational facilities. The Pavilion Estate offers a vibrant community atmosphere, with easy access to parks, shops, and schools.

? Dual living areas provide ample space for versatile living and entertaining arrangements.

? The kitchen includes sleek stone benchtops, a gas

Price : \$650,000 - \$700,000

View : <https://www.ypa.com.au/7994721>



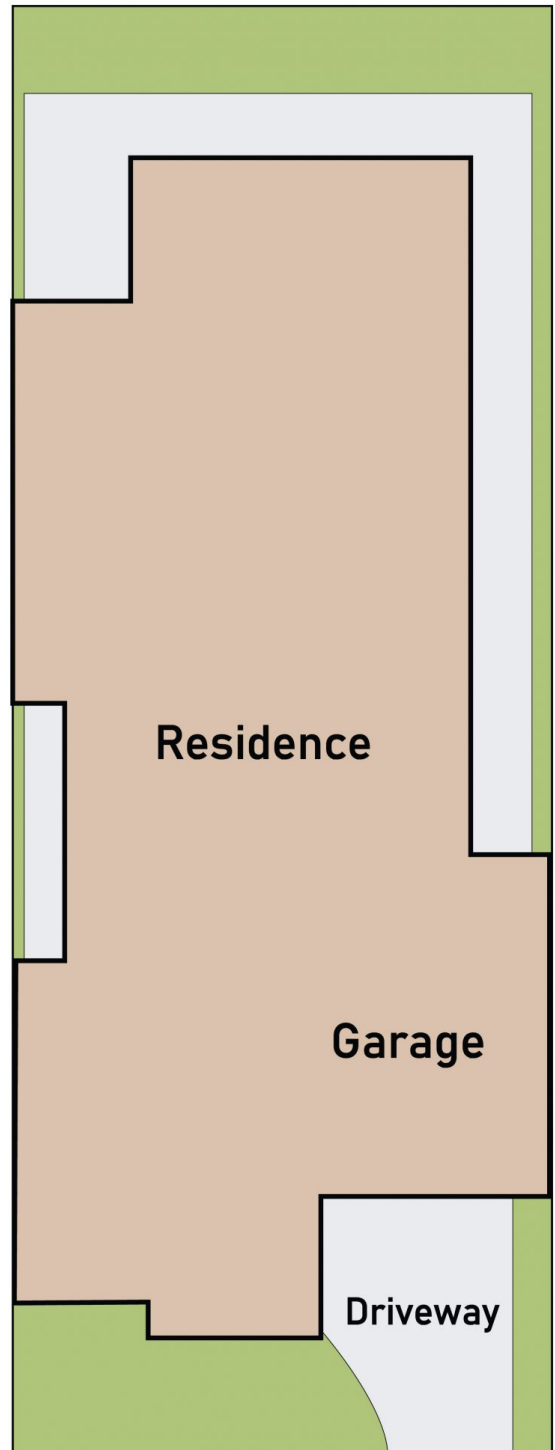
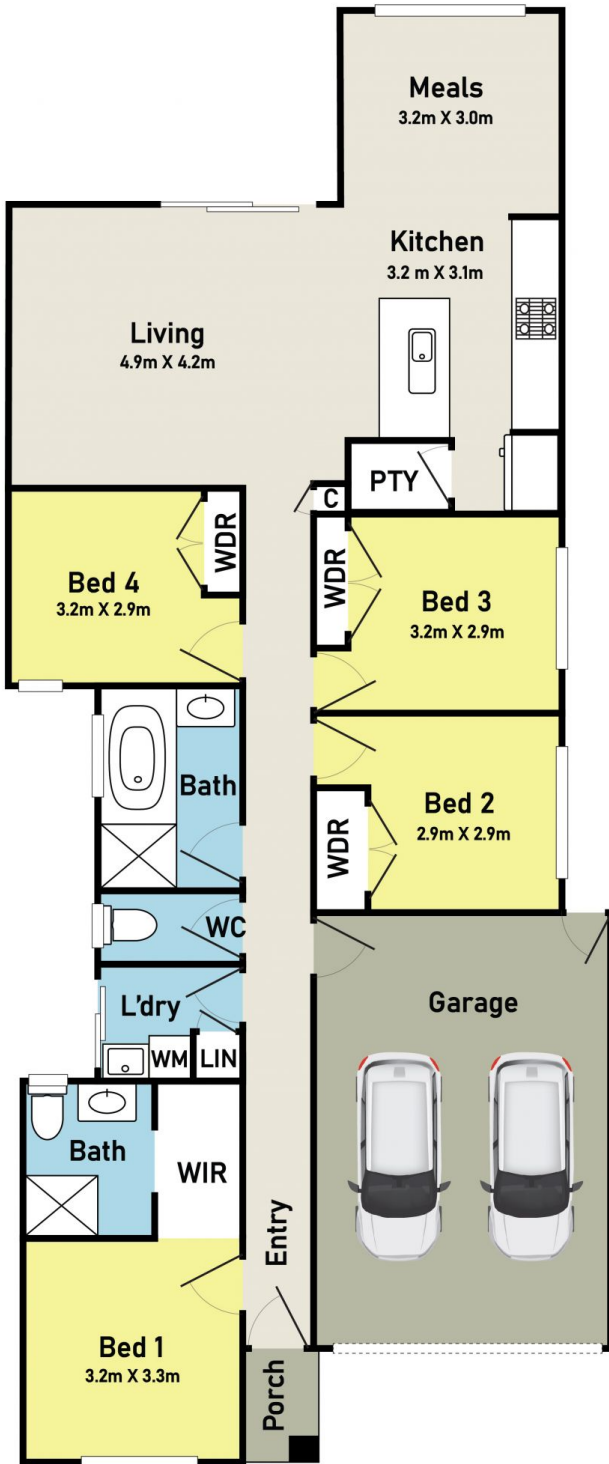
Kamaljeet Singh
0433 619 387



Rajiv Ranjan
0413 775 214

Floor Plan

Site Plan



10 Midfield Way, Clyde

* Dimensions are approximate and for illustrative purposes only

