

## 2 Caithness Close Sunbury VIC

3 2 3

Nestled in a pristine court location with the serene backdrop of Kismet Park, this charming residence presents an enticing blend of comfort, potential, and convenience. Offering an abundance of space and poised for future upgrades, this home beckons you to embrace its many offerings.

Enter to discover cathedral ceilings throughout with a large living area off the entry, complemented by a fully upgraded kitchen boasting modern amenities such as an oven, induction cooktop, integrated dishwasher, and luxurious stone waterfall benchtops. The dining area seamlessly connects, offering an ideal space for gatherings and everyday meals. Additionally, a generously sized living area provides ample room for relaxation and entertainment.

Retreat to the master bedroom featuring a built-in robe and

**Price** : \$ 700,000

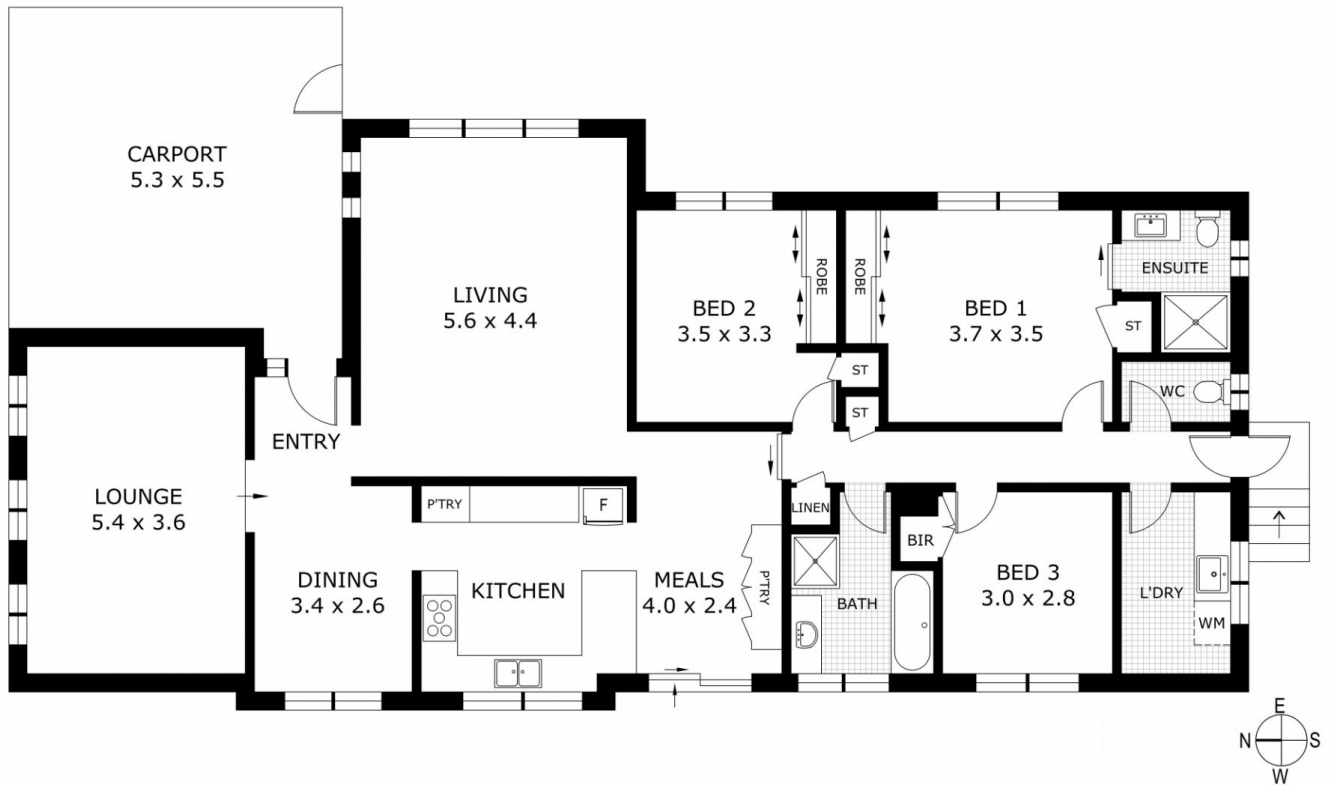
**View** : <https://www.ypa.com.au/7991381>



**Lisa Totaro**  
0410 144 215



**Daniel Scarano**  
0448 735 298



Disclaimer: All images, views and diagrams are indicative only. Dimensions, areas and landscape are indicative and subject to change without notice. Purchasers should check the plans and specifications included in the terms of the contract of sale carefully prior to signing the contract.