

24 Rainier Avenue Dromana VIC

3 1 2

Welcome to this great value home in Dromana! Nestled on an expansive 850m2 block, this well-built brick home offers SPACE, COMFORT, CONVENIENCE & CHARM

Featuring:

? Home Business Space / Office / Studio with separate entrance from Catalina Avenue

? Rear Access with convenient double gate via Catalina Avenue.

? Modern Kitchen with Westinghouse induction cooktop, oven, and dishwasher

? Plenty of cupboards, drawers & benchtop space

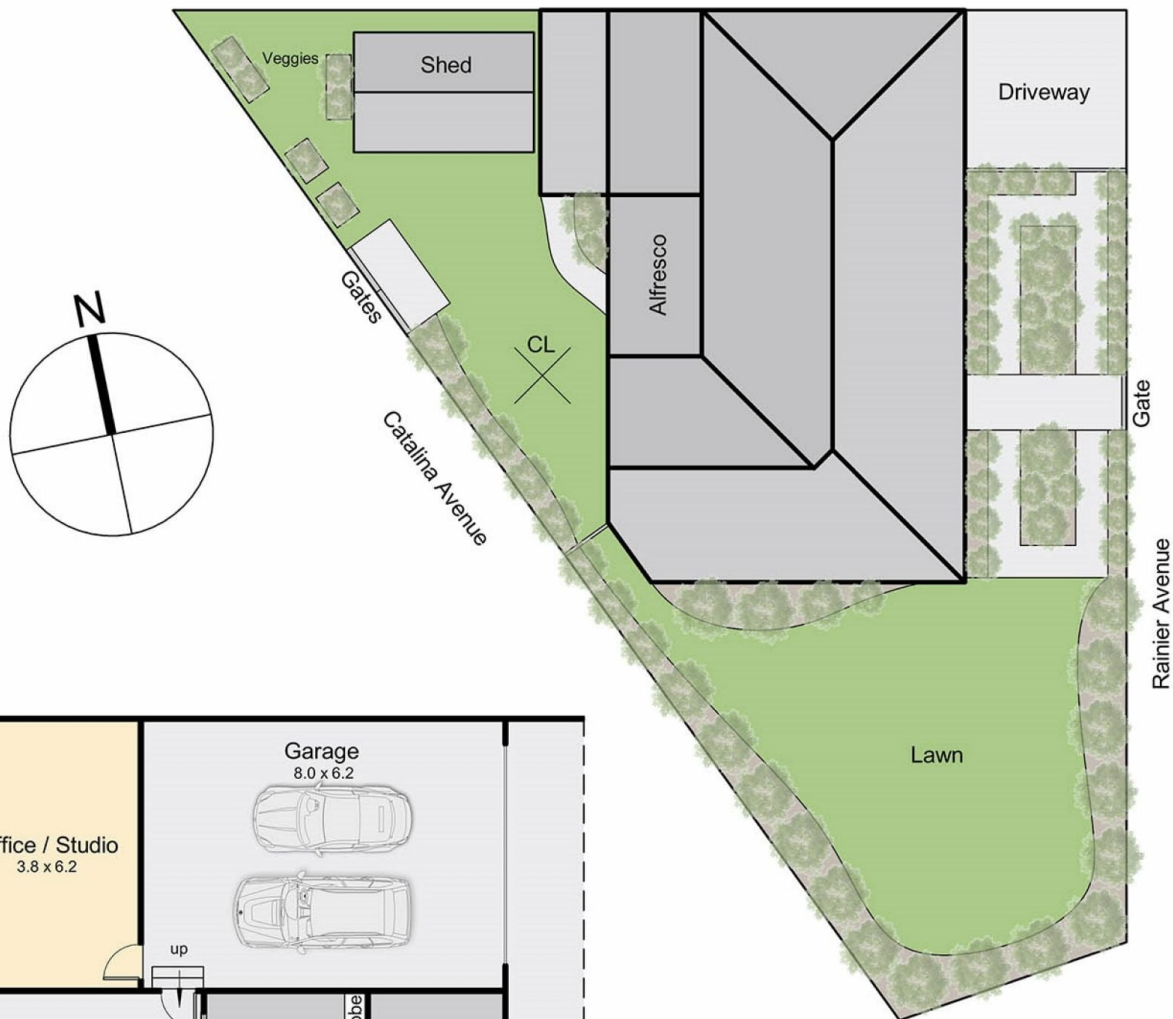
Price : \$ 860,000
Land Size : 850 sqm
View : <https://www.ypa.com.au/7990820>



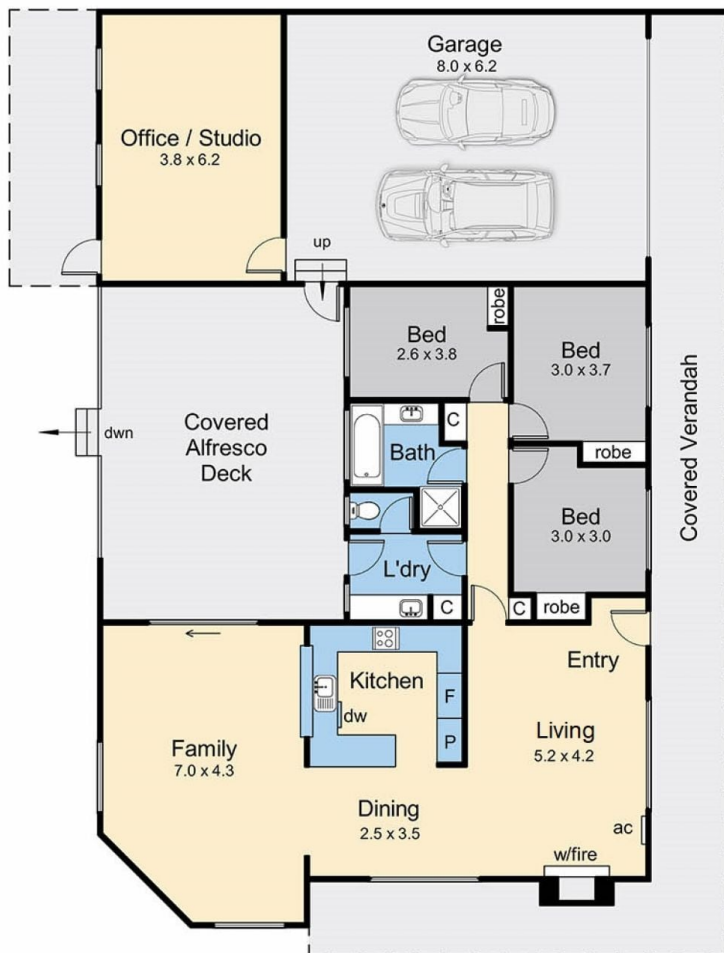
Elke Remscheid
0423 211 315



Ryan Oswald
0402 720 822



Site Plan



Floor Plan

Internal area = 15 squares (approx)
 Garage area = 4.8 squares (approx)
 Alfresco / Verandah area = 10.2 squares (approx)
 Total area = 30 squares (approx)

Land area = 849 sqm (approx)

24 Rainier Avenue, Dromana

This floorplan is for illustration purposes only and no warranty is given to its accuracy. Purchasers are advised to carry out their own investigations. Produced by **realtwriters** (03) 5970 2222