



18 Geelong Road Werribee VIC

3 1 1

YPA Point Cook proudly presents 18 Geelong Road, Werribee VIC. This is your chance to secure a rare gem? a 956m² block of land nestled in the heart of Werribee.

This property is centrally located in Werribee and offers approximately 956m² of prime land. It presents a unique opportunity for renovation, rebuilding, or development (STCA).

Featuring three spacious bedrooms, this home offers ample living space for a growing family. The centrally located main bathroom ensures convenience for all residents.

As you step inside, you'll be greeted by a large front lounge room that flows seamlessly through to the kitchen and meals area. The kitchen is equipped with a stove, oven,

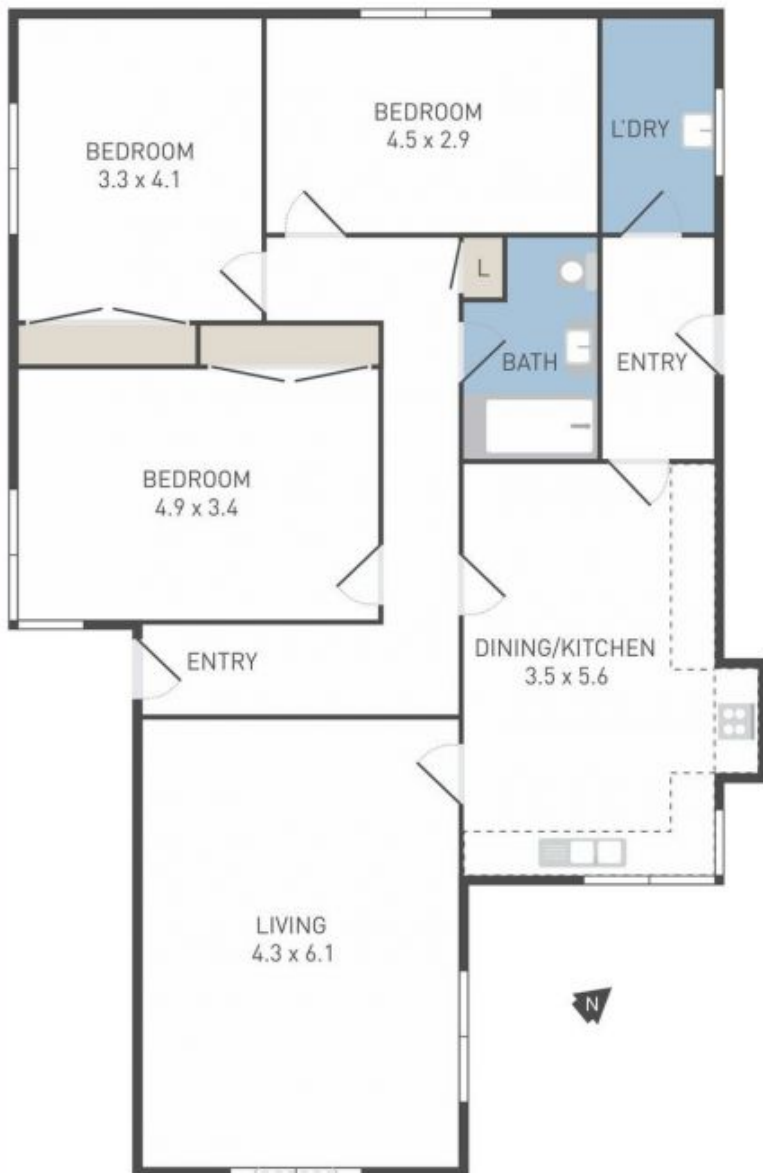
Price : Contact Agent !!
Land Size : 956 sqm
View : <https://www.ypa.com.au/7990117>



Pardeep Chahal
0431 595 725



Manjot Bawa
0433 853 301



ура