



13 Highland Place Tarneit VIC

4 2 2

YPA is proud to present this gorgeous family home in the heart of The Seasons. Overlooking parklands this home is also located within close proximity to local shopping centres, primary schools, high schools & Tarneit train station.

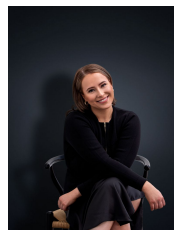
Property features include:

- ? Four bedrooms, master with ensuite & walk in robe
- ? Open plan kitchen & meals area overlooking family living area
- ? Central main bathroom with separate toilet and laundry
- ? Oversized garage with rear & internal access

Extra features: Outdoor entertaining area, dishwasher, 900mm stainless steel cooking appliances, ducted heating, split system cooling, caesar stone benchtops & an abundance of cupboard space.

Price : \$570 pw

View : <https://www.ypa.com.au/7989744>



Ali Dowling
0450 778 972