



12 Oceanic Drive Safety Beach VIC

3 2 2

Great Value, fantastic Lifestyle! Nestled in a quiet street in the Martha Cove Marina, you will love living here! A Quality built home with generous proportions!

Price : \$1,150,000
Land Size : 528 sqm
View : <https://www.ypa.com.au/7985338>

About the Area:

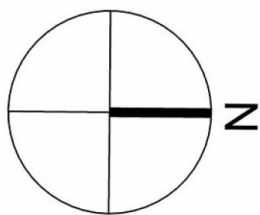
- ? Beautifully landscaped, quiet streetscape
- ? 2 minutes stroll to the South Harbour
- ? Boat ramp, park land, playground within a short stroll or drive
- ? Security patrolled streets
- ? Security System directly wired and monitored by Martha Cove Security



Elke Remscheid
0423 211 315

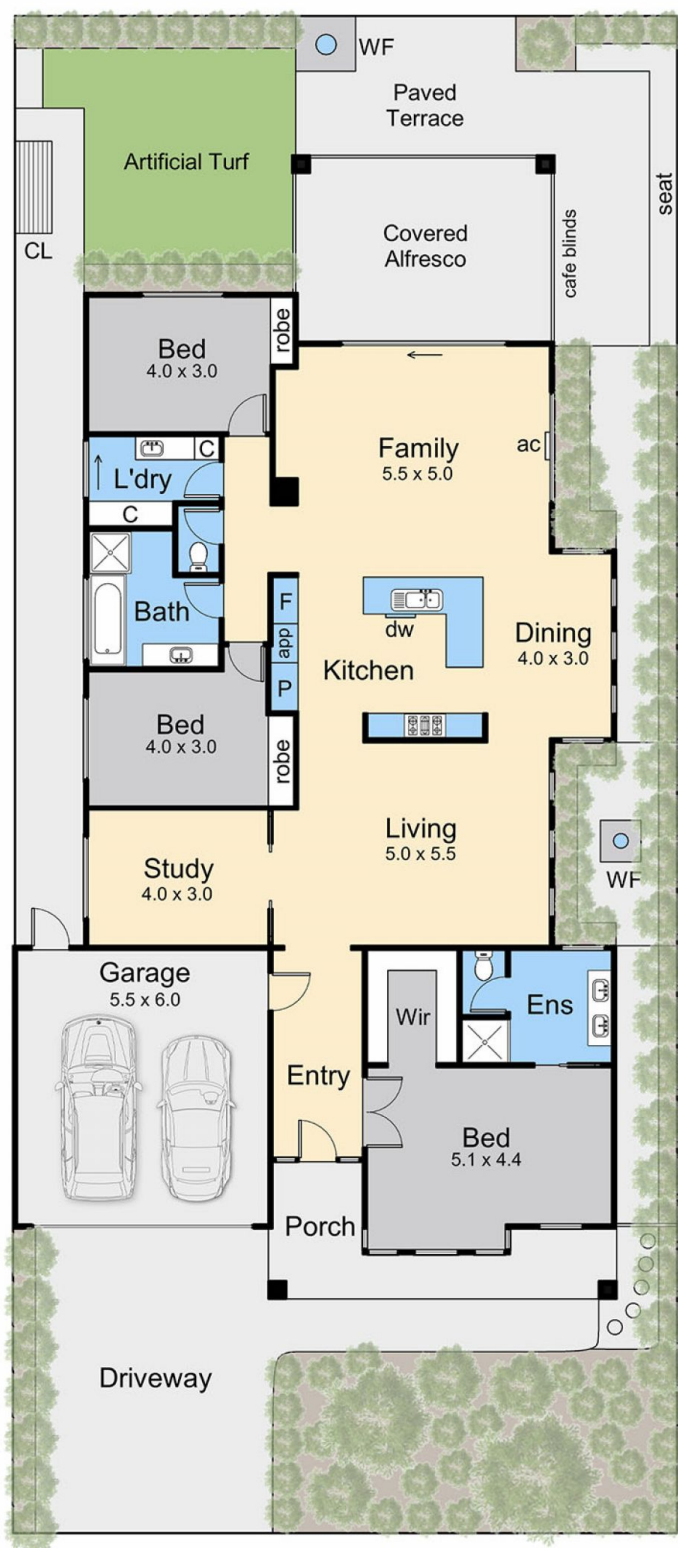


Michael Dimech
0417 399 511



Internal area = 19.9 squares (approx)
 Alfresco area = 3.2 squares (approx)
 Garage area = 3.8 squares (approx)
 Total area = 26.9 squares (approx)

Land area = 528 sqm (approx)



Floor Plan

12 Oceanic Drive, Safety Beach

This floorplan is for illustration purposes only and no warranty is given to its accuracy. Purchasers are advised to carry out their own investigations. Produced by **realitywriters** (03) 5970 2222