



15 Wyuna Court Mount Martha VIC

3 3 3

When you have decided its time to start living life this home will help complete the picture, with wonderful views during the day turning to a magical light show at night with views over Port Phillip Bay, Safety Beach, Dromana, McCrae and out to Arthurs Seat. With 270m2 of living space on a 942m2 block, this property is perfectly located just 300m from Mt Martha Park and a short drive to Mount Martha Village.

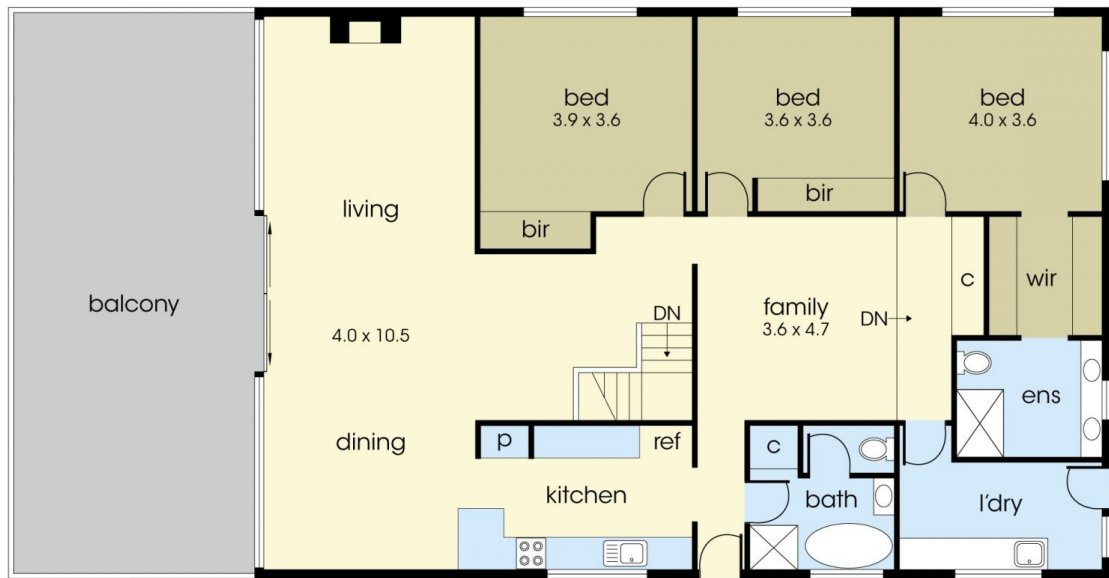
Featuring:

- ? A Grand entry with polished concrete floors
- ? Modern aesthetic with neat and clean interior design
- ? Newly Renovated kitchen, bathrooms, balcony, and interior finishes
- ? Huge open plan living and dining area leading to an oversize balcony with 180 degree bay views upstairs.
- ? Galley-style kitchen with efficient use of space

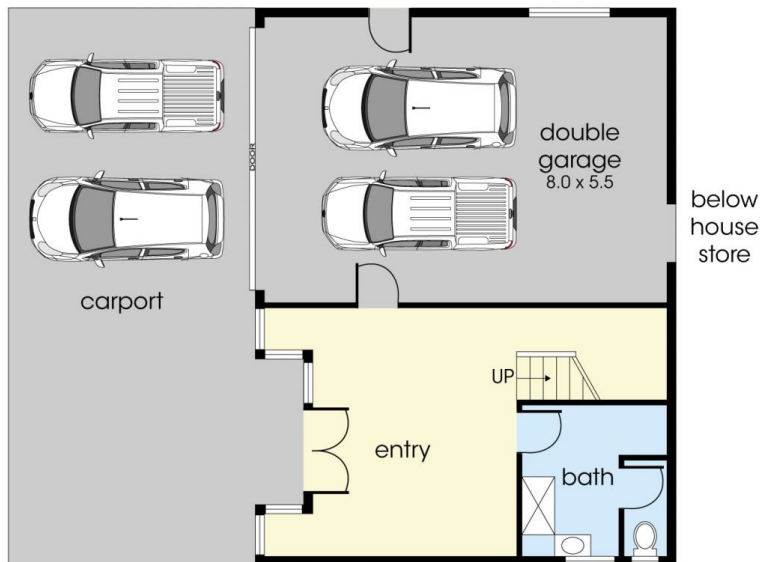
Price : \$1,950,000 - \$2,145,000
Land Size : 942 sqm
View : <https://www.ypa.com.au/7985290>



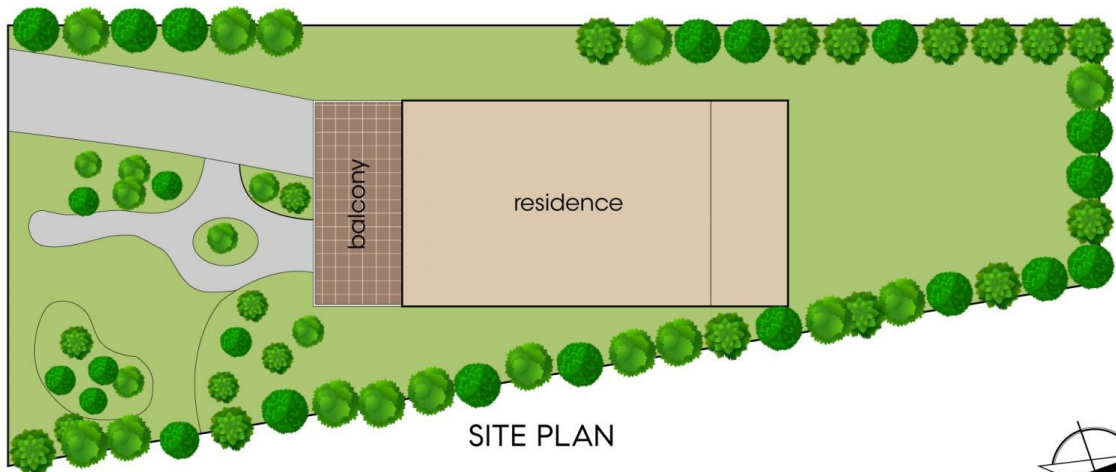
Michael Dimech
0417 399 511



FIRST FLOOR



GROUND FLOOR



15 Wyuna Court, Mount Martha

This floorplan is for illustration purposes only and no warranty is given to its accuracy. Purchasers are advised to carry out their own investigations.