



## 17 Gillespie Drive Weir Views VIC

4  2  2 

Located in the high-demand and exclusive Toolern Waters Estate in Weir Views, close to Opalia Shopping Centre, Melton South Train Station, multiple schools, parks, shopping, and much more, it is easy to see why the area is in such high demand with investors and families.

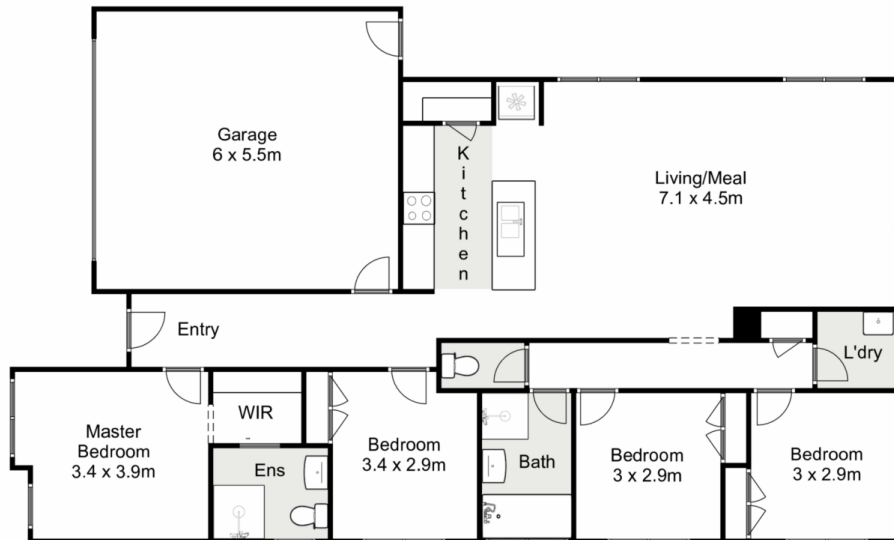
Upon entry, you are met with the master bedroom, which features abundant natural light and is further complimented by quality brand-new carpet, a walk-in robe, and a stunning ensuite. The remaining bedrooms are great in size, feature built-in robes, and are serviced by a bright central bathroom with the same quality as the ensuite.

The heart of the home offers a modern kitchen complete with all the necessities such as ample bench and storage space, gas cooktop, rangehood, dishwasher, and oven. The kitchen perfectly incorporates the spacious meals and

**Price** : \$539,000 - \$569,000  
**Land Size** : 462 sqm  
**View** : <https://www.ypa.com.au/7984501>



**Monty Tyagi**  
0435 896 907



## 17 Gillespie Drive, Weir Views

YPA

Whilst every attempt has been made to ensure the accuracy of the floor plan contained here, measurements of doors, windows, rooms and any other items are approximate and no responsibility is taken for any error, omission, or mis-statement. This plan is for illustrative purposes only and should be used as such by any prospective purchaser. The services, systems and appliances shown have not been tested and no guarantee as to their operability or efficiency can be given.

