



10 Copse Wood Bend Caroline Springs VIC

3 2 2

Introducing a stunning family home that embodies the perfect combination of location, amenities, and versatile living spaces. Situated in a desirable pocket of Caroline Springs, this property offers everything you could dream of. Let's explore the features that make this home truly exceptional.

Features Include:

- ? Master bedroom showcasing a walk-in wardrobe and ensuite
- ? Additional two spacious bedrooms with built-in wardrobes
- ? Home office
- ? Formal lounge room or fourth bedroom
- ? The open plan kitchen is located perfectly to incorporate the meals and family area
- ? Kitchen complete with ample cupboard space, stainless steel appliances including gas cooktop, electric oven, range

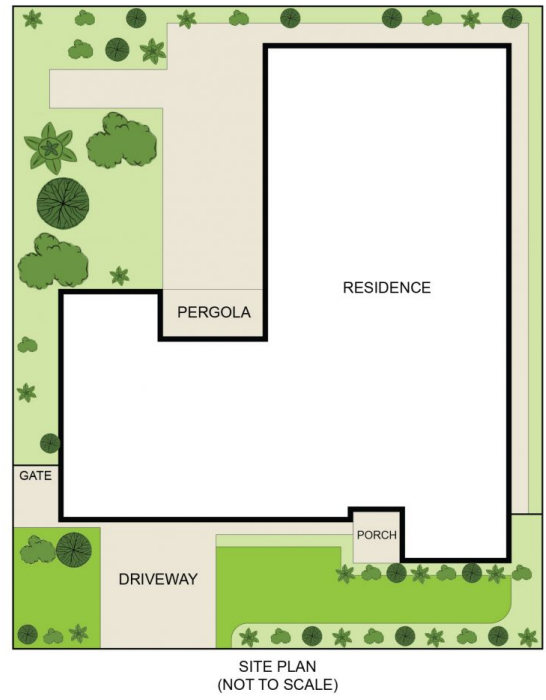
Price : \$ 730,000
Land Size : 500 sqm
View : <https://www.ypa.com.au/7981730>



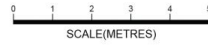
Andrew Migliorisi
0432 526 844



Stephen Azzopardi
0402 012 554



10 Copse Wood Bend, Caroline Springs



DISCLAIMER : ALL DIMENSIONS ARE AN APPROXIMATION ONLY AND NO GUARANTEE IS GIVEN WITH RESPECT TO ACCURACY.