

## 19 Steadfield Circuit Melton South VIC

3  2  2 

Displaying an impressive blend of captivating modern features and contemporary style, this home makes for a sensational low maintenance domain, whether it be a first home, downsize or an investment. Located within close proximity to all levels of schooling, parks, freeway access, Cobblebank and Melton South Train Station, Cobblebank Village and Opalia Shopping Centre, the location of this home is highly sought after.

Upon entry you are met with the front living area offering a great space for your family to enjoy. Continuing through, the living and dining area seamlessly incorporate the stunning kitchen which features stone bench tops, gas cooktop and built in oven, dishwasher and ample bench and cupboard space and also hosts a separate space to be utilised as a study nook if needed!

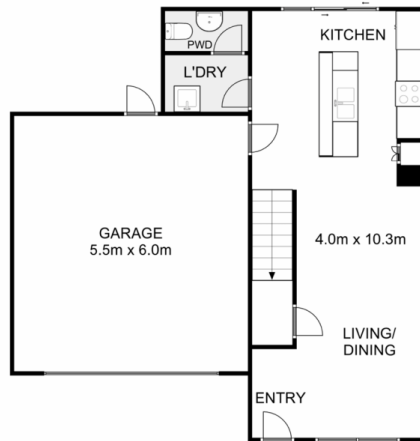
**Price** : UNDER CONTRACT TEAM YPA  
**Land Size** : 159 sqm  
**View** : <https://www.ypa.com.au/7979766>



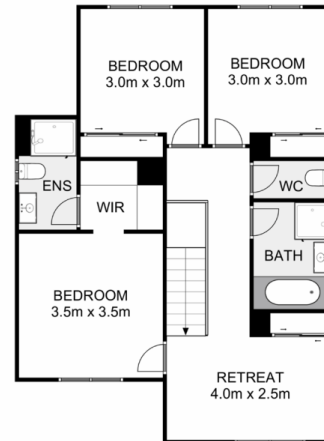
**Shane Spiteri**  
0488 980 115



**Ricky Frew**  
0402 007 100



GROUND FLOOR



FIRST FLOOR

## 19 Steadfield Circuit, Melton South

ypa

Whilst every attempt has been made to ensure the accuracy of the floor plan contained here, measurements of doors, windows, rooms and any other items are approximate and no responsibility is taken for any error, omission, or mis-statement. This plan is for illustrative purposes only and should be used as such by any prospective purchaser. The services, systems and appliances shown have not been tested and no guarantee as to their operability or efficiency can be given.

