



2/307 Eastbourne Road Capel Sound VIC

3  2  2 

Nestled just 850m* from the sparkling foreshore and bay trail, this property embodies the essence of sunny coastal living. This exquisite three-bedroom, two-bathroom townhouse is a sanctuary for and those seeking a blissful beachside retreat, including investors, downsizers & first-home buyers.

Step inside to discover a haven drenched in natural light, thanks to its coveted north-facing orientation and strategically placed windows. The modern interiors boast a seamless blend of style and functionality, offering picturesque views from every corner.

On the ground level, a spacious open-plan layout awaits, featuring a sleek kitchen, inviting dining area, and cozy living space that effortlessly flows onto a sun-kissed, grassy courtyard. Upstairs, find three spacious bedrooms

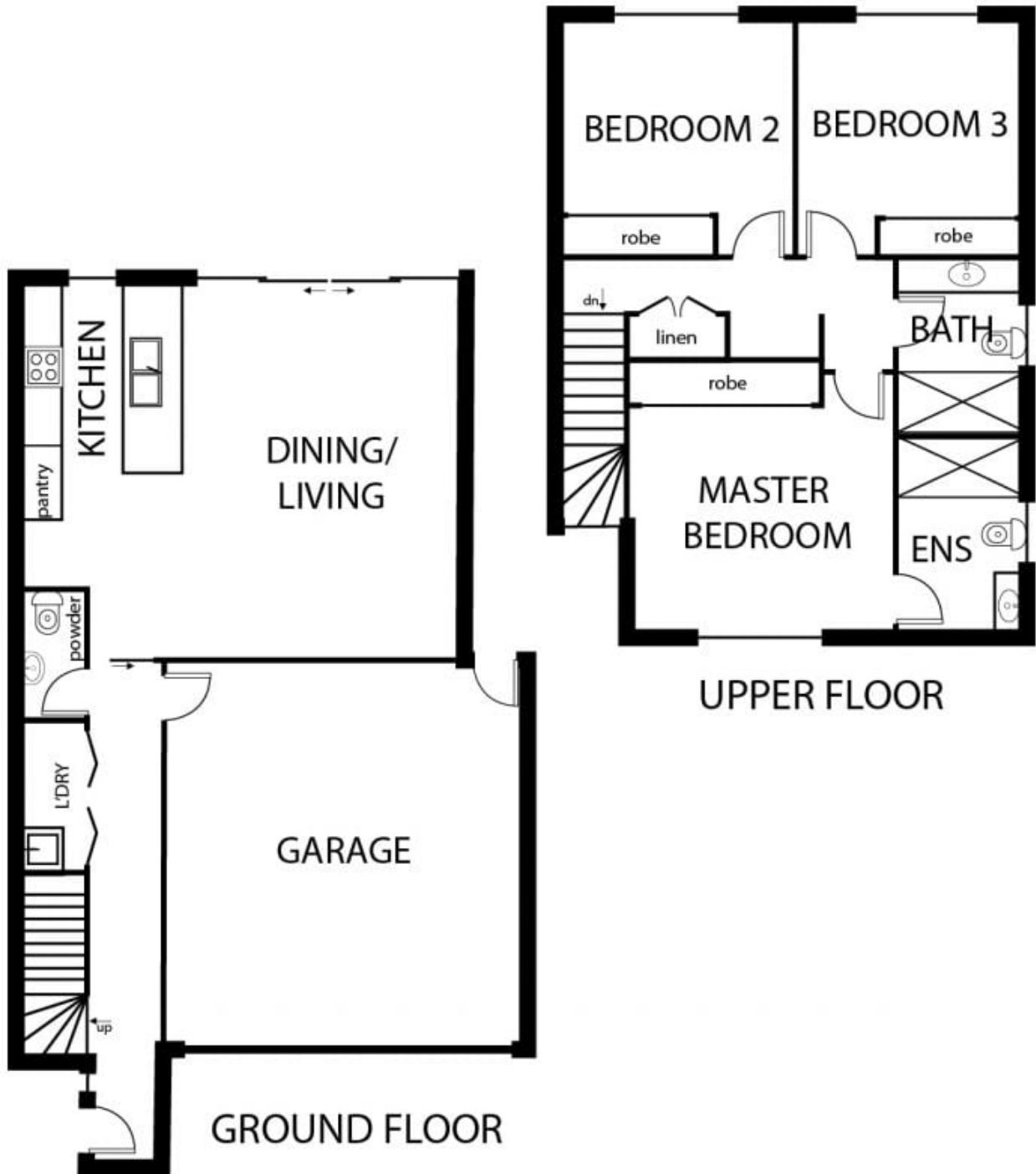
Price : \$695,000 - \$750,000
Land Size : 136 sqm
View : <https://www.ypa.com.au/7979243>



Elke Remscheid
0423 211 315



Will Likendey
0448 785 744



2/307 Eastbourne Road, Capel Sound

This floorplan is for illustration purposes only and no warranty is given to its accuracy. Buyers are advised to conduct their own due diligence.