

49 The Ridge Winter Valley VIC

4 2 2

Positioned to capture picturesque parkland views and surrounded by open space, this expansive home offers a standout feature set to captivate discerning buyers.

Boasting a generous 755m² (approx.) block, this residence comprises four bedrooms, with the master featuring a walk-in robe and ensuite boasting a double vanity. Two additional bedrooms offer built-in robes, while the potential fourth bedroom presents as a spacious third living area or a substantial study.

The heart of the home is thoughtfully designed within the split-level layout, showcasing a high-quality kitchen with stone benches, a 900mm stove and oven, and a large walk-in pantry. The dining and kitchen area flows seamlessly into a spacious theatre room, offering versatile living options.

A standout feature of this home is the elevated platform living area, with glass balustrades creating a stunning

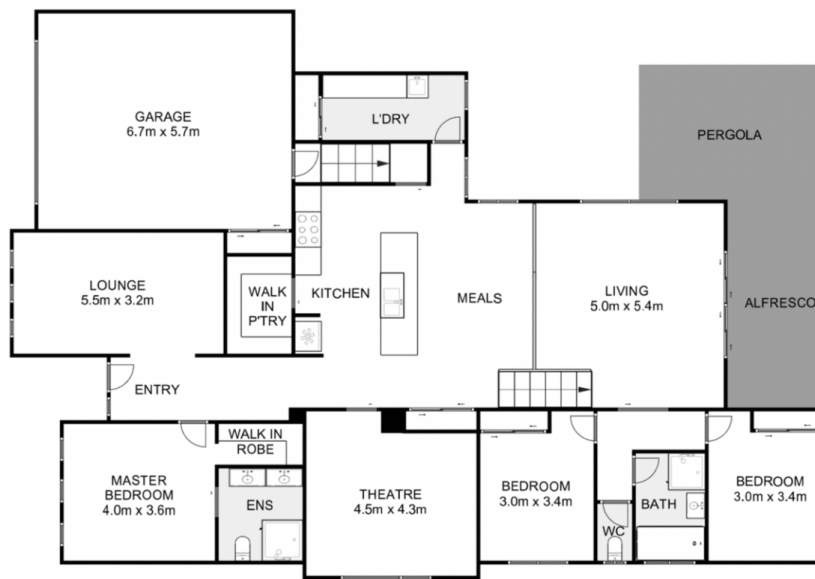
Price : \$700,000 - \$749,000
Land Size : 755 sqm
View : <https://www.ypa.com.au/7977941>



Shane O'Brien
0431 766 082



Zac Boland
0439 442 286



49 The Ridge, Winter Valley

YPA

Whilst every attempt has been made to ensure the accuracy of the floor plan contained here, measurements of doors, windows, rooms and any other items are approximate and no responsibility is taken for any error, omission, or mis-statement. This plan is for illustrative purposes only and should be used as such by any prospective purchaser. The services, systems and appliances shown have not been tested and no guarantee as to their operability or efficiency can be given.

