

## 48 Cootamundra Circuit Harkness VIC

4 🏠 2 🚗 2 🚗

Set on a huge 629m<sup>2</sup> (approx.) allotment positioned in a sought-after pocket of Harkness this wonderful property hosts plenty of inclusions suiting both first home buyers or any savvy investor! Being in close proximity to everything Melton has to offer including, schooling of all levels (including the new Melton Christian College) Woodgrove Shopping Centre, Melton Waves Leisure centre, Navan Park, walking tracks, easy freeway access and so much more.

Upon entering this beautiful home you are greeted with a spacious entrance hall with warm colour tones that flow throughout. To your right is the large master bedroom featuring a walk in robe and stunning ensuite. Situated down the hall are three more generously sized bedrooms, each with a double built-in robe and serviced by the bright central bathroom and separate toilet.

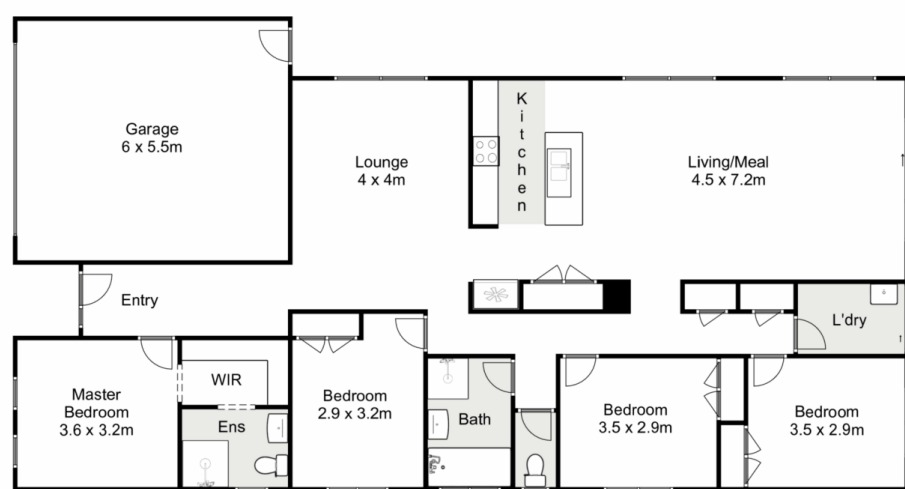
**Price** : \$569,000 - \$609,000  
**Land Size** : 629 sqm  
**View** : <https://www.ypa.com.au/7976015>



**Ryan Anders**  
0434 900 300



**Britteny Cooke**  
0426 211 338



## 48 Cootamundra Circuit, Harkness



Whilst every attempt has been made to ensure the accuracy of the floor plan contained here, measurements of doors, windows, rooms and any other items are approximate and no responsibility is taken for any error, omission, or mis-statement. This plan is for illustrative purposes only and should be used as such by any prospective purchaser. The services, systems and appliances shown have not been tested and no guarantee as to their operability or efficiency can be given.

