



40 High Street Werribee VIC

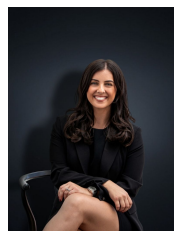
3 1 2

Positioned in one of the most central pockets of Werribee this charming family home is uniquely set on approx. 690 sq m. Not only is the large allotment a huge advantage but taking into consideration the nearby amenities this is certainly a rare find. Within walking distance to Werribee CBD & Train Station and a short drive to reputable schools and freeway access this is located brilliantly!

Not only charming from the street it gets way better from the minute you step inside, offering:

- ? Three bedrooms, all with built in robes
- ? Renovated central bathroom
- ? Large formal lounge on entry with fireplace
- ? Kitchen / meals and family living arrangement
- ? Unrestricted side access and plenty of off-street parking
- ? Massive decked entertaining area

Price : \$ 622,500
Land Size : 689 sqm
View : <https://www.ypa.com.au/7975160>



Kirsty Cunningham
 0414 344 475



Kiarah Bagnato
 0449 941 895

40 High Street, WERRIBEE



Whilst every attempt has been made to ensure the accuracy of the floor plan contained here, measurements of doors, windows, rooms and any other items are approximate and no responsibility is taken for any error, omission, or mis-statement. This plan is for illustrative purposes only and should be used as such by any prospective purchaser. The services, systems and appliances shown have not been tested and no guarantee as to their operability or efficiency can be given.