



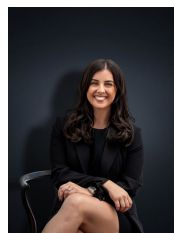
## 14 Earling Close Wyndham Vale VIC

3 1 2

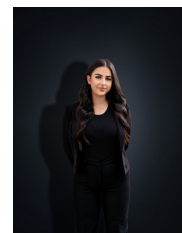
This right here is the perfect start to a property journey. With so much potential sitting on approximately 560 sq m this spacious home is located within walking distance to public transport, parks, schools and local shops! With unrestricted side access and plenty of off-street parking to use to your advantage the home in its quiet cul-de-sac position offers:

- ? Three bedrooms with built in robes
- ? Spacious central bathroom full of light with its huge bay window
- ? A large step-down lounge on entry with beautiful open brick wall, cathedral timber lined ceiling and fireplace keeping winter times super cosy
- ? Kitchen / Meals area with loads of storage
- ? Freshly painted & updated carpets
- ? New curtains

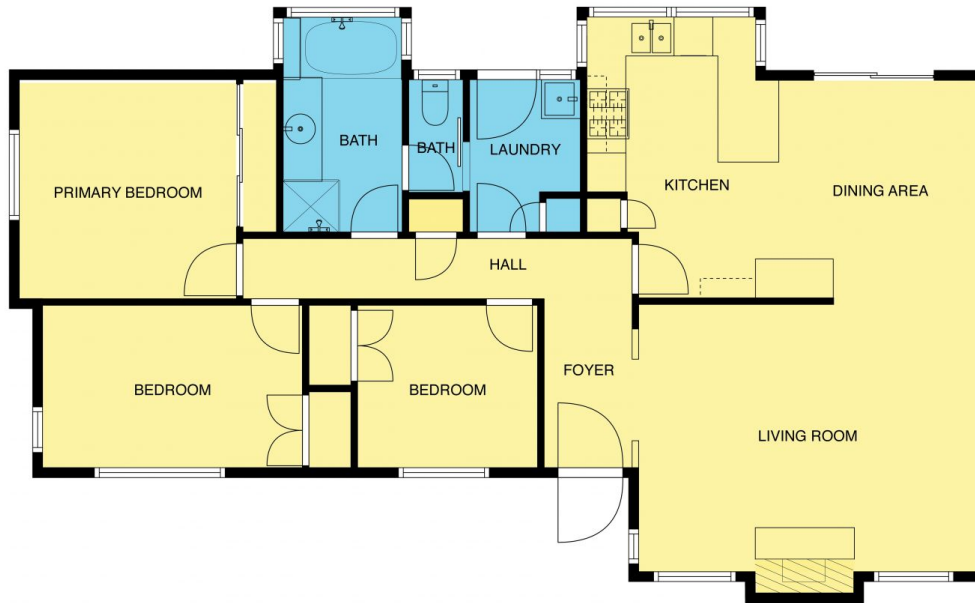
**Price** : \$490,000 - \$530,000  
**Land Size** : 563 sqm  
**View** : <https://www.ypa.com.au/7975133>



**Kirsty Cunningham**  
0414 344 475



**Stefanie Zahra**  
0406 871 722



14 Earling Close, Wyndham Vale

2D FLOOR PLAN

MEASUREMENTS SHOULD BE CONSIDERED AS INDICATIVE ONLY. DEEMED HIGHLY RELIABLE BUT NOT GUARANTEED.